



MANUEL REVERT

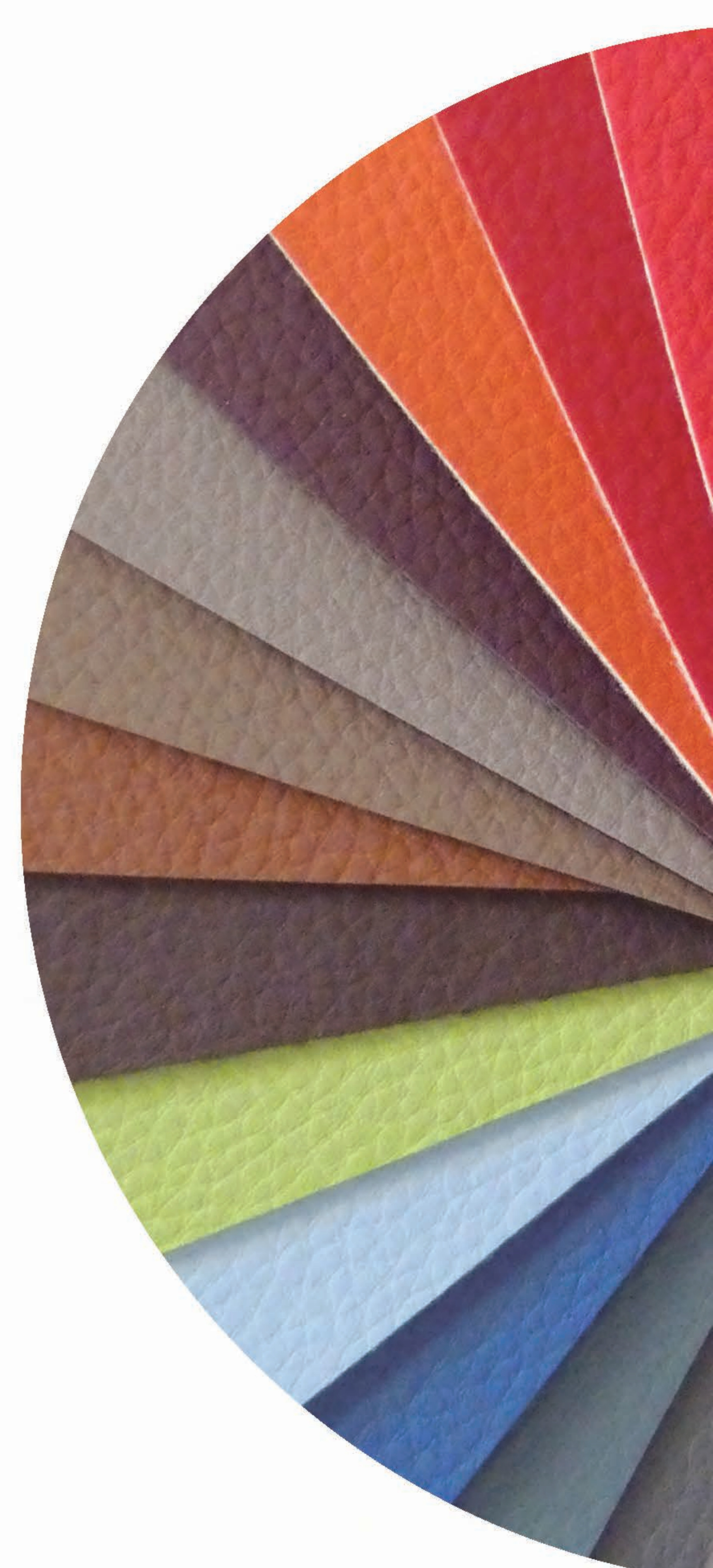
VINYLYL

POLIPIEL



VINYLYL

POLIPIEL



MANUEL REVERT

CANNES



CANNES 001 WHITE



CANNES 111 OPTIC WHITE



CANNES 005 BEIGE



CANNES 070 DARK BEIGE



CANNES 754 TAUPE



CANNES 752 BRONZE



CANNES 310 BROWN



CANNES 266 ORANGE



CANNES 749 TERRACOTTA



CANNES 220 RED



CANNES 222 DARK RED



CANNES 204 RIOJA



CANNES 298 BURGUNDY



CANNES 345 CHOCOLATE



CANNES 063 ROSE



CANNES 041 CORAL



CANNES 746 FUCSHIA



CANNES 095 LILAC



CANNES 066 ORCHID



CANNES 098 MAUVE



CANNES 745 VIOLET



CANNES 755 YELLOW



CANNES 065 OLIVE



CANNES 410 PISTACHIO



CANNES 394 GREEN



CANNES 044 EMERALD



CANNES 774 PINE



CANNES 753 GLACIER



CANNES 703 HONEYDEW



CANNES 702 LAGOON



CANNES 704 STORM



CANNES 505 SKY BLUE



CANNES 080 TURQUOISE



CANNES 772 AQUAMARINE



CANNES 045 INDIGO



CANNES 515 BLUE



CANNES 770 MARINE



CANNES 743 SILVER



CANNES 744 LIGHT GREY



CANNES 620 GREY



CANNES 901 BLACK

CANNES

CANNES

clean
only with water



EASY CLEAN



PHTALATES FREE



LEATHER TOUCH



REACH COMPLIANT



FIRE RETARDANT
BS 5852 part 1



SOFT TOUCH



HEAVY METAL FREE



AZO DYE FREE



MANUEL REVERT

| | | |
|--|---|---|
| Composición Composition Composition | | 78% PVC - 20% PES - 2% PU |
| Ancho Width Laize | | 140 cm |
| Peso Weight Poids | | 550 g/m ² |
| Rapport Repeat Rapport | Ancho Width Laize | - |
| | Largo Length Longueur | - |
| Martindale UNE-EN ISO 12947 - BS 2543 | | 100.000 |
| Solidez a la luz Fastness to light Résistance à la lumière ISO 105-B02 | | 5 |
| Solidez al agua clorada Fastness to chlorinated water Résistance à l'eau chlorée | | - |
| Solidez al agua de mar Fastness to sea water Résistance à l'eau de mer | | - |
| Resistencia a la flexión Flexural strength Résistance a la flexion | | 100.000 |
| Solidez al frote Fastness to rubbing Résistance au frottement | Seco Dry Sec | 5 |
| | Húmedo Wet Humide | 5 |
| Orientación Orientation Orientation | | |
| Aplicaciones Application Application | | TAPIZADOS DECORACIÓN |
| Acabado Finish Finition | Tratamiento tacto suave Soft touch finish Doux au toucher | |
| Recomendaciones Recommendations Recommandations | <p>No exponer directamente a la luz solar. Do not expose to direct sunlight. Para su limpieza, emplear un suave paño humedecido en agua jabonosa. Use a soft cloth dampened in soapy water for its cleaning. No utilizar disolventes, lejía o detergentes agresivos. El jabón debe ser neutro. Do not use solvents, bleach or harsh detergents. Soap must be natural.</p> | |
| Instrucciones de lavado Care instructions Entretien | | |
| | | |
| No lavar Do not wash Ne pas laver | No blanquear (lejía / alternativos) Do not bleach (bleach / alternatives) Ne pas blanchir (lejía / alternatives) | No secar en secadora Do not tumble dry Ne pas sécher au sèche-linge |
| | | |
| | | No planchar Do not iron Ne pas repasser |
| | | |
| | | No limpiar en seco Do not dry clean Ne pas laver à sec |

clean
only with water

Clean regularly with a damp soapy cloth. Do not use detergents, solvent cleaners, polish, wax or patent chemicals.

Limpiar con un paño húmedo y con jabón neutro. No utilizar alcoholes, lejía ni disolvente.

Pour un entretien efficace, nettoyer régulièrement avec un savon doux et une éponge. Ne pas utiliser alcool, eau de Javel ou de solvant.

OEKO-TEX®
CONFIDENCE IN TEXTILES
STANDARD 100
981736 AITEX
Tested for harmful substances.
www.oeko-tex.com/standard100

Soy Empresa Circular

clevercare.info

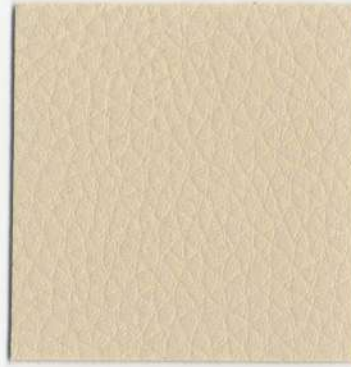
DOLARO-FLUO



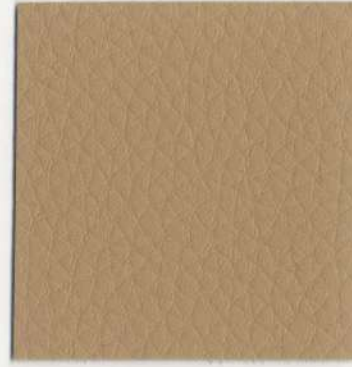
DOLARO 101 WHITE



DOLARO 111 OPTIC WHITE



DOLARO 042 BEIGE



DOLARO 070 DARK BEIGE



DOLARO 713 TAUPE



DOLARO 752 BRONZE



DOLARO 310 BROWN



DOLARO 072 TERRACOTTA



DOLARO 204 RIOJA



DOLARO 345 CHOCOLATE



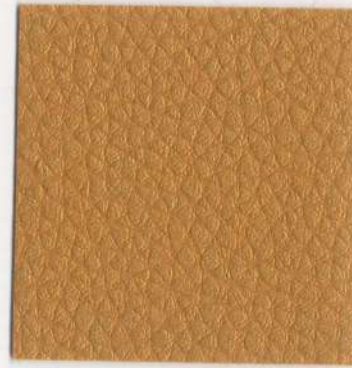
DOLARO 743 SILVER



DOLARO 262 SAND



DOLARO 010 GOLD



DOLARO 260 HONEY



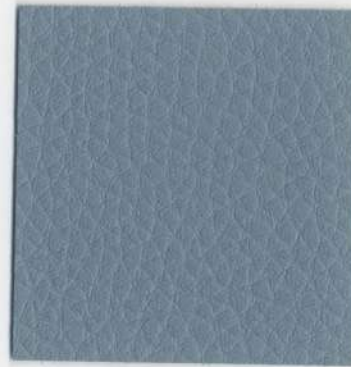
DOLARO 263 COPPER



DOLARO 067 SKY BABY



DOLARO 064 STEEL BLUE



DOLARO 264 ICE



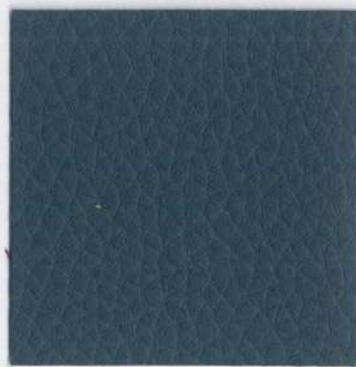
DOLARO 515 BLUE



DOLARO 770 MARINE



DOLARO 265 BALTIC



DOLARO 753 GLACIER



DOLARO 744 LIGHT GREY



DOLARO 620 GREY



DOLARO 037 BLACK

DOLARO-FLUO

DOLARO-FLUO

clean
only with water



EASY CLEAN



PHTALATES FREE



LEATHER TOUCH



REACH COMPLIANT



FIRE RETARDANT
BS 5852 part 1



SOFT TOUCH



HEAVY METAL FREE



AZO DYE FREE



MANUEL REVERT

| | | |
|--|---|---|
| Composición Composition Composition | | 78% PVC - 20% PES - 2% PU |
| Ancho Width Laize | | 140 cm |
| Peso Weight Poids | | 450 g/m ² |
| Rapport Repeat Rapport | Ancho Width Laize | - |
| | Largo Length Longueur | - |
| Martindale UNE-EN ISO 12947 - BS 2543 | | 80.000 |
| Solidez a la luz Fastness to light Résistance à la lumière ISO 105-B02 | | 6 |
| Solidez al agua clorada Fastness to chlorinated water Résistance à l'eau chlorée | | - |
| Solidez al agua de mar Fastness to sea water Résistance à l'eau de mer | | - |
| Resistencia a la flexión Flexural strength Résistance a la flexion ISO 5402 | | 100.000 |
| Solidez al frote Fastness to rubbing Résistance au frottement | Seco Dry Sec | 4 |
| | Húmedo Wet Humide | 4 |
| Orientación Orientation Orientation | | |
| Aplicaciones Application Application | | TAPIZADOS DECORACIÓN |
| Acabado Finish Finition | Tratamiento tacto suave Soft touch finish Doux au toucher | |
| Recomendaciones Recommendations Recommandations | <p>No exponer directamente a la luz solar. Do not expose to direct sunlight. Para su limpieza, emplear un suave paño humedecido en agua jabonosa. Use a soft cloth dampened in soapy water for its cleaning. No utilizar disolventes, lejía o detergentes agresivos. El jabón debe ser neutro. Do not use solvents, bleach or harsh detergents. Soap must be natural.</p> | |
| Instrucciones de lavado Care instructions Entretien | | |
| | | |
| No lavar Do not wash Ne pas laver | No blanquear (lejía / alternativos) Do not bleach (bleach / alternatives) Ne pas blanchir (lejía / alternatives) | No secar en secadora Do not tumble dry Ne pas sécher au sèche-linge |
| | | |
| | | No planchar Do not iron Ne pas repasser |
| | | |
| | | No limpiar en seco Do not dry clean Ne pas laver à sec |

clean
only with water

Clean regularly with a damp soapy cloth. Do not use detergents, solvent cleaners, polish, wax or patent chemicals.

Limpiar con un paño húmedo y con jabón neutro. No utilizar alcoholes, lejía ni disolvente.

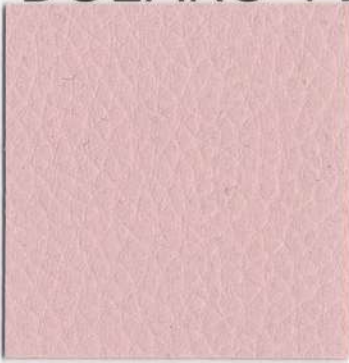
Pour un entretien efficace, nettoyer régulièrement avec un savon doux et une éponge. Ne pas utiliser alcool, eau de Javel ou de solvant.

OEKO-TEX®
CONFIDENCE IN TEXTILES
STANDARD 100
981736 AITEX
Tested for harmful substances.
www.oeko-tex.com/standard100

Soy Empresa Circular

clevercare.info

DOLARO-FLUO



DOLARO 033 PINK BABY



DOLARO 041 CORAL



DOLARO 063 ROSE



FLUO 477 LILAC



FLUO 478 PURPLE



DOLARO 066 ORCHID



DOLARO 017 BURGUNDY



DOLARO 023 PINK



DOLARO 220 RED



DOLARO 222 DARK RED



FLUO 277 MANDARINE



FLUO 755 YELLOW



DOLARO 764 GRAPEFRUIT



DOLARO 065 OLIVE



DOLARO 266 PISTACHO



FLUO 539 KIWI



DOLARO 044 EMERALD



DOLARO 774 PINE



DOLARO 267 CEDAR



DOLARO 703 HONEYDEW



DOLARO 702 LAGOON



FLUO 080 TURQUOISE



DOLARO 772 AQUAMARINE



DOLARO 045 INDIGO



DOLARO 676 BLEU AZUR



DOLARO-FLUO

DOLARO-FLUO

clean
only with water



EASY CLEAN



PHTALATES FREE



LEATHER TOUCH



REACH COMPLIANT



FIRE RETARDANT
BS 5852 part 1



SOFT TOUCH



HEAVY METAL FREE



AZO DYE FREE



MANUEL REVERT

| | | |
|--|---|---|
| Composición Composition Composition | | 78% PVC - 20% PES - 2% PU |
| Ancho Width Laize | | 140 cm |
| Peso Weight Poids | | 450 g/m ² |
| Rapport Repeat Rapport | Ancho Width Laize | - |
| | Largo Length Longueur | - |
| Martindale UNE-EN ISO 12947 - BS 2543 | | 80.000 |
| Solidez a la luz Fastness to light Résistance à la lumière ISO 105-B02 | | 6 |
| Solidez al agua clorada Fastness to chlorinated water Résistance à l'eau chlorée | | - |
| Solidez al agua de mar Fastness to sea water Résistance à l'eau de mer | | - |
| Resistencia a la flexión Flexural strength Résistance a la flexion ISO 5402 | | 100.000 |
| Solidez al frote Fastness to rubbing Résistance au frottement | Seco Dry Sec | 4 |
| | Húmedo Wet Humide | 4 |
| Orientación Orientation Orientation | | |
| Aplicaciones Application Application | | TAPIZADOS DECORACIÓN |
| Acabado Finish Finition | Tratamiento tacto suave Soft touch finish Doux au toucher | |
| Recomendaciones Recommendations Recommandations | <p>No exponer directamente a la luz solar. Do not expose to direct sunlight. Para su limpieza, emplear un suave paño humedecido en agua jabonosa. Use a soft cloth dampened in soapy water for its cleaning. No utilizar disolventes, lejía o detergentes agresivos. El jabón debe ser neutro. Do not use solvents, bleach or harsh detergents. Soap must be natural.</p> | |
| Instrucciones de lavado Care instructions Entretien | | |
| | | |
| No lavar Do not wash Ne pas laver | No blanquear (lejía / alternativos) Do not bleach (bleach / alternatives) Ne pas blanchir (lejía / alternatives) | No secar en secadora Do not tumble dry Ne pas sécher au sèche-linge |
| | | |
| No planchar Do not iron Ne pas repasser | No limpiar en seco Do not dry clean Ne pas laver à sec | |

clean
only with water

Clean regularly with a damp soapy cloth. Do not use detergents, solvent cleaners, polish, wax or patent chemicals.

Limpiar con un paño húmedo y con jabón neutro. No utilizar alcoholes, lejía ni disolvente.

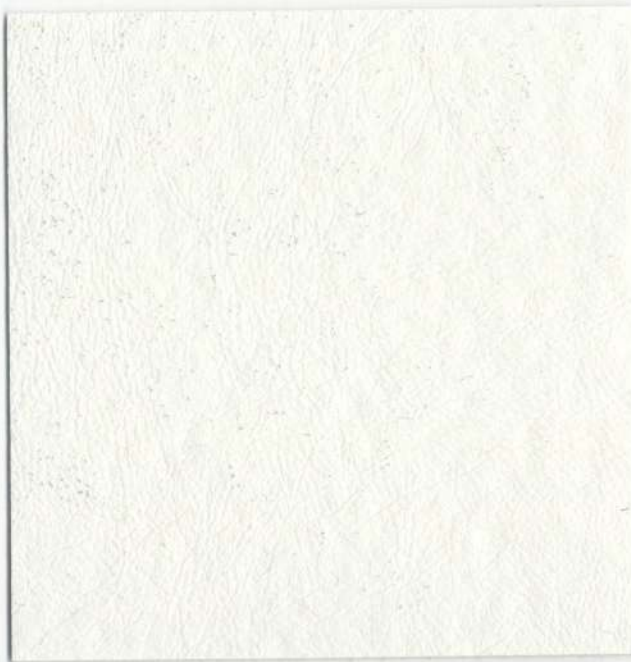
Pour un entretien efficace, nettoyer régulièrement avec un savon doux et une éponge. Ne pas utiliser alcool, eau de Javel ou de solvant.

OEKO-TEX®
CONFIDENCE IN TEXTILES
STANDARD 100
981736 AITEX
Tested for harmful substances.
www.oeko-tex.com/standard100

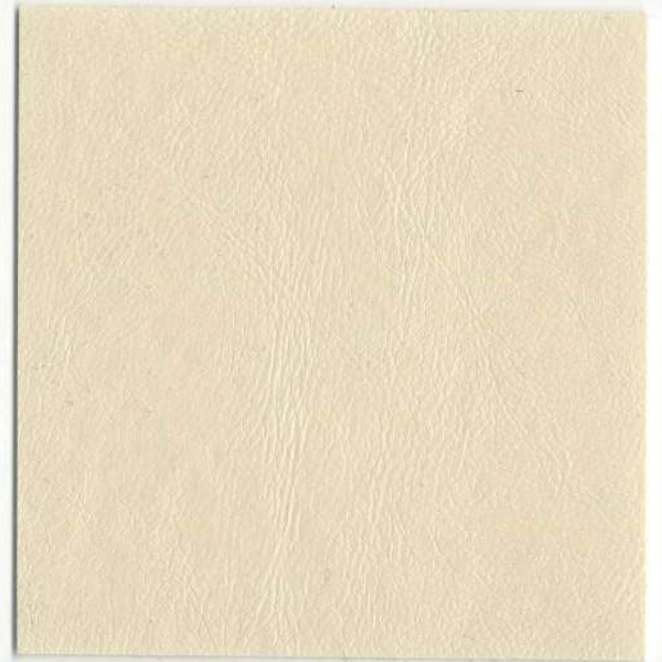
Soy Empresa Circular

clevercare.info

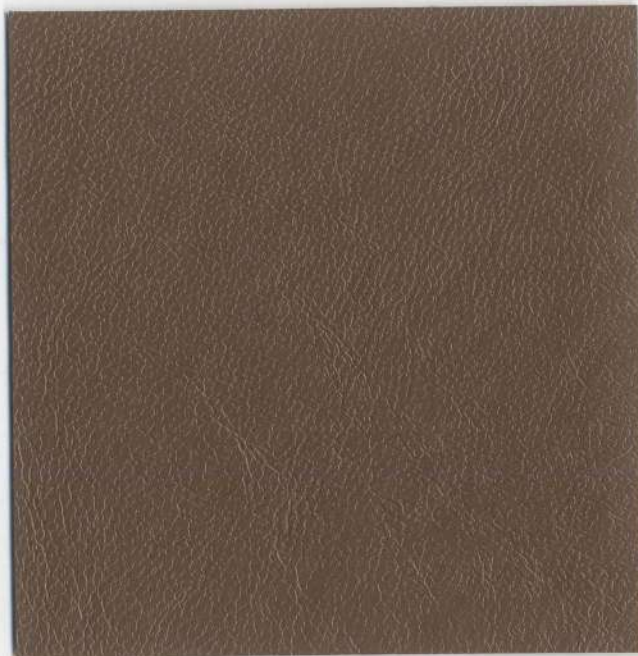
KAPRIS



KAPRIS 001 WHITE



KAPRIS 005 BEIGE



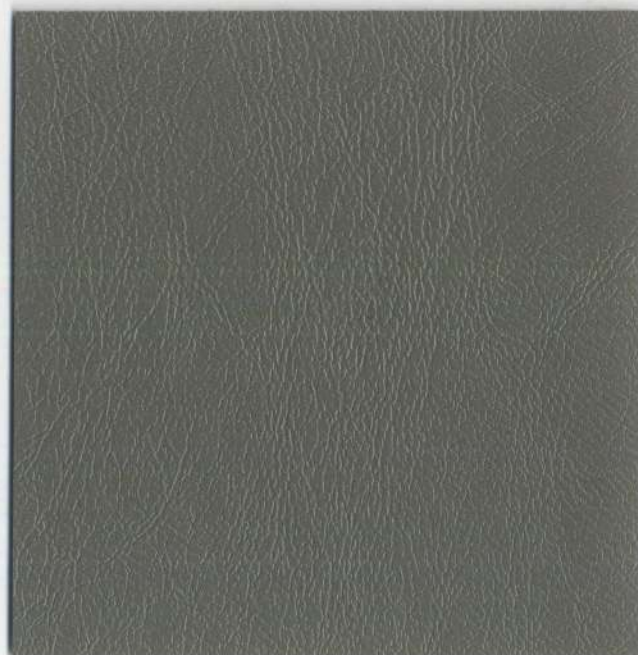
KAPRIS 713 TAUPE



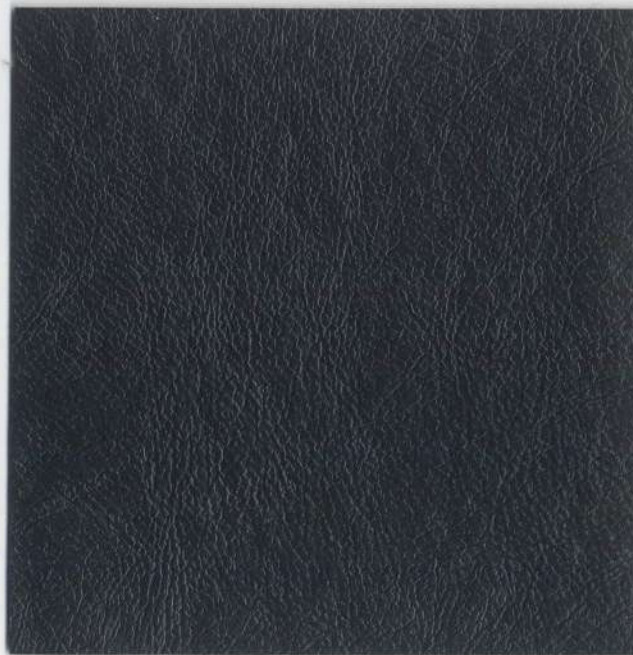
KAPRIS 345 CHOCOLATE



KAPRIS 901 BLACK



KAPRIS 744 LIGHT GREY



KAPRIS 620 GREY



KAPRIS

KAPRIS

clean
only with water



EASY CLEAN



PHTHALATES FREE



LEATHER TOUCH



REACH COMPLIANT



FIRE RETARDANT
BS 5852 part 1



SOFT TOUCH



HEAVY METAL FREE



AZO DYE FREE



MANUEL REVERT

| | | |
|--|---|---|
| Composición Composition Composition | | 79% PVC - 21% PES |
| Ancho Width Laize | | 140 cm |
| Peso Weight Poids | | 400 g/m ² |
| Rapport Repeat Rapport | Ancho Width Laize | - |
| | Largo Length Longueur | - |
| Martindale UNE-EN ISO 12947 - BS 2543 | | 50.000 |
| Solidez a la luz Fastness to light Résistance à la lumière ISO 105-B02 | | 5 |
| Solidez al agua clorada Fastness to chlorinated water Résistance à l'eau chlorée | | - |
| Solidez al agua de mar Fastness to sea water Résistance à l'eau de mer | | - |
| Resistencia a la flexión Flexural strength Résistance a la flexion ISO 5402 | | 100.000 |
| Solidez al frote Fastness to rubbing Résistance au frottement | Seco Dry Sec | 4 |
| | Húmedo Wet Humide | 4-5 |
| Orientación Orientation Orientation | | |
| Aplicaciones Application Application | | TAPIZADOS DECORACIÓN |
| Acabado Finish Finition | Tratamiento tacto suave Soft touch finish Doux au toucher | |
| Recomendaciones Recommendations Recommandations | <p>No exponer directamente a la luz solar. Do not expose to direct sunlight. Para su limpieza, emplear un suave paño humedecido en agua jabonosa. Use a soft cloth dampened in soapy water for its cleaning. No utilizar disolventes, lejía o detergentes agresivos. El jabón debe ser neutro. Do not use solvents, bleach or harsh detergents. Soap must be natural.</p> | |
| Instrucciones de lavado Care instructions Entretien | | |
| | | |
| No lavar Do not wash Ne pas laver | No blanquear (lejía / alternativos) Do not bleach (bleach / alternatives) Ne pas blanchir (lejía / alternativos) | No secar en secadora Do not tumble dry Ne pas sécher au sèche-linge |
| | | |
| | | No planchar Do not iron Ne pas repasser |
| | | |
| | | No limpiar en seco Do not dry clean Ne pas laver à sec |

clean
only with water

Clean regularly with a damp soapy cloth. Do not use detergents, solvent cleaners, polish, wax or patent chemicals.

Limpia con un paño húmedo y con jabón neutro. No utilizar alcoholes, lejía ni disolvente.

Pour un entretien efficace, nettoyer régulièrement avec un savon doux et une éponge. Ne pas utiliser alcool, eau de Javel ou de solvant.

OEKO-TEX®
CONFIDENCE IN TEXTILES
STANDARD 100
981736 AITEX
Tested for harmful substances.
www.oeko-tex.com/standard100

Soy Empresa Circular

clevercare.info

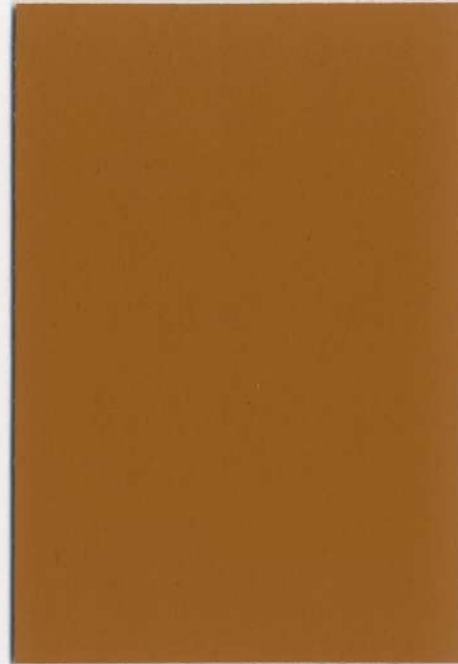
S. MATTE



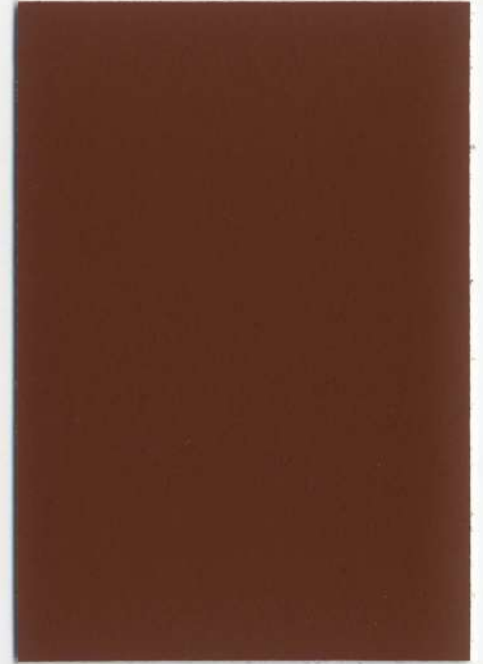
S. MATTE 801 WHITE



S. MATTE 000 BEIGE



S. MATTE 407 CAMEL



S. MATTE 335 BROWN



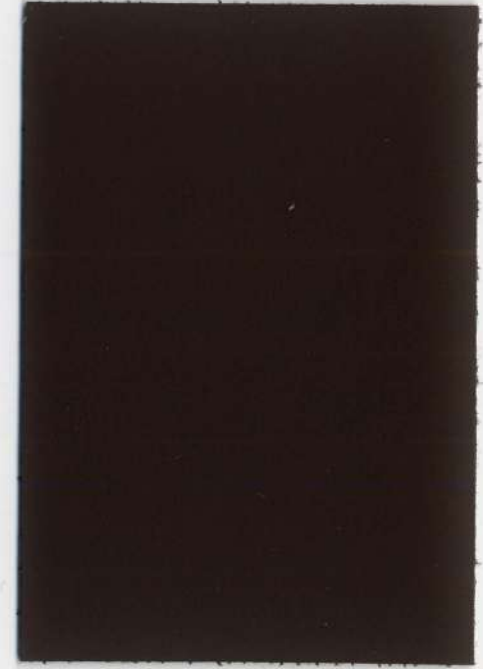
S. MATTE 344 GREEN



S. MATTE 341 RED



S. MATTE 345 BURGUNDY



S. MATTE 260 CHOCOLATE



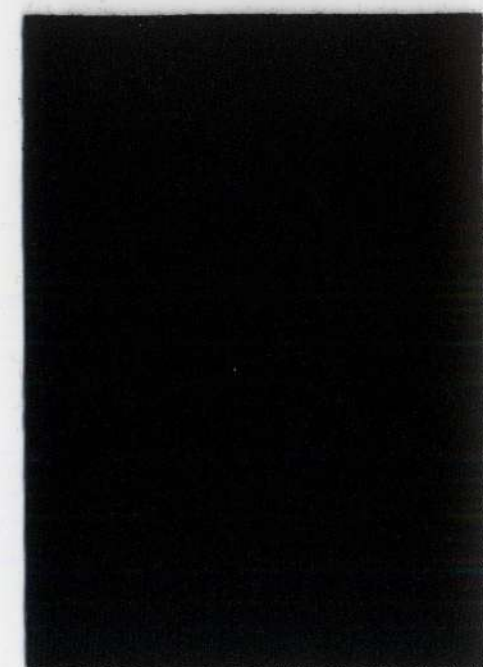
S. MATTE 342 ELECTRIC BLUE



S. MATTE 346 MARINE BLUE



S. MATTE 721 GREY



S. MATTE 079 BLACK

S. MATTE

S. MATTE

clean
only with water



EASY CLEAN



PHTALATES FREE



LEATHER TOUCH



REACH COMPLIANT



FIRE RETARDANT
BS 5852 part 1



SOFT TOUCH



HEAVY METAL FREE



AZO DYE FREE



MANUEL REVERT

| | | |
|--|---|---|
| Composición Composition Composition | | 78% PVC - 20% PES - 2% PU |
| Ancho Width Laize | | 140 cm |
| Peso Weight Poids | | 550 g/m ² |
| Rapport Repeat Rapport | Ancho Width Laize | - |
| | Largo Length Longueur | - |
| Martindale UNE-EN ISO 12947 - BS 2543 | | 85.000 |
| Solidez a la luz Fastness to light Résistance à la lumière ISO 105-B02 | | 5 |
| Solidez al agua clorada Fastness to chlorinated water Résistance à l'eau chlorée | | - |
| Solidez al agua de mar Fastness to sea water Résistance à l'eau de mer | | - |
| Resistencia a la flexión Flexural strength Résistance a la flexion ISO 5402 | | 100.000 |
| Solidez al frote Fastness to rubbing Résistance au frottement | Seco Dry Sec | 5 |
| | Húmedo Wet Humide | 5 |
| Orientación Orientation Orientation | | |
| Aplicaciones Application Application | | TAPIZADOS DECORACIÓN |
| Acabado Finish Finition | Tratamiento tacto suave Soft touch finish Doux au toucher | |
| Recomendaciones Recommendations Recommendations | <p>clean only with water</p> <p>No exponer directamente a la luz solar. Do not expose to direct sunlight. Para su limpieza, emplear un suave paño humedecido en agua jabonosa. Use a soft cloth dampened in soapy water for its cleaning. No utilizar disolventes, lejía o detergentes agresivos. El jabón debe ser neutro. Do not use solvents, bleach or harsh detergents. Soap must be natural.</p> | |
| Instrucciones de lavado Care instructions Entretien | | |
| | | |
| No lavar Do not wash Ne pas laver | No blanquear (lejía / alternativos) Do not bleach (bleach / alternatives) Ne pas blanchir (lejía / alternatives) | No secar en secadora Do not tumble dry Ne pas sécher au sèche-linge |
| | | |
| No planchar Do not iron Ne pas repasser | No limpiar en seco Do not dry clean Ne pas laver à sec | |

clean
only with water

n

Clean regularly with a damp soapy cloth. Do not use detergents, solvent cleaners, polish, wax or patent chemicals.

Limpiar con un paño húmedo y con jabón neutro. No utilizar alcoholes, lejía ni disolvente.

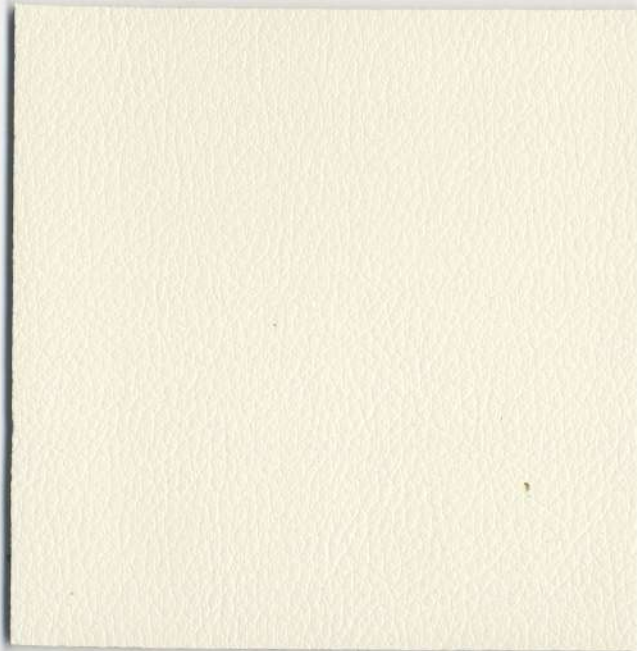
Pour un entretien efficace, nettoyer régulièrement avec un savon doux et une éponge. Ne pas utiliser alcool, eau de Javel ou de solvant.

OEKO-TEX®
CONFIDENCE IN TEXTILES
STANDARD 100
981736 AITEX
Tested for harmful substances.
www.oeko-tex.com/standard100

Soy Empresa Circular

clevercare.info

VALENTINO



VALENTINO 001 WHITE



VALENTINO 612 OCHRE



VALENTINO 060 TABAC



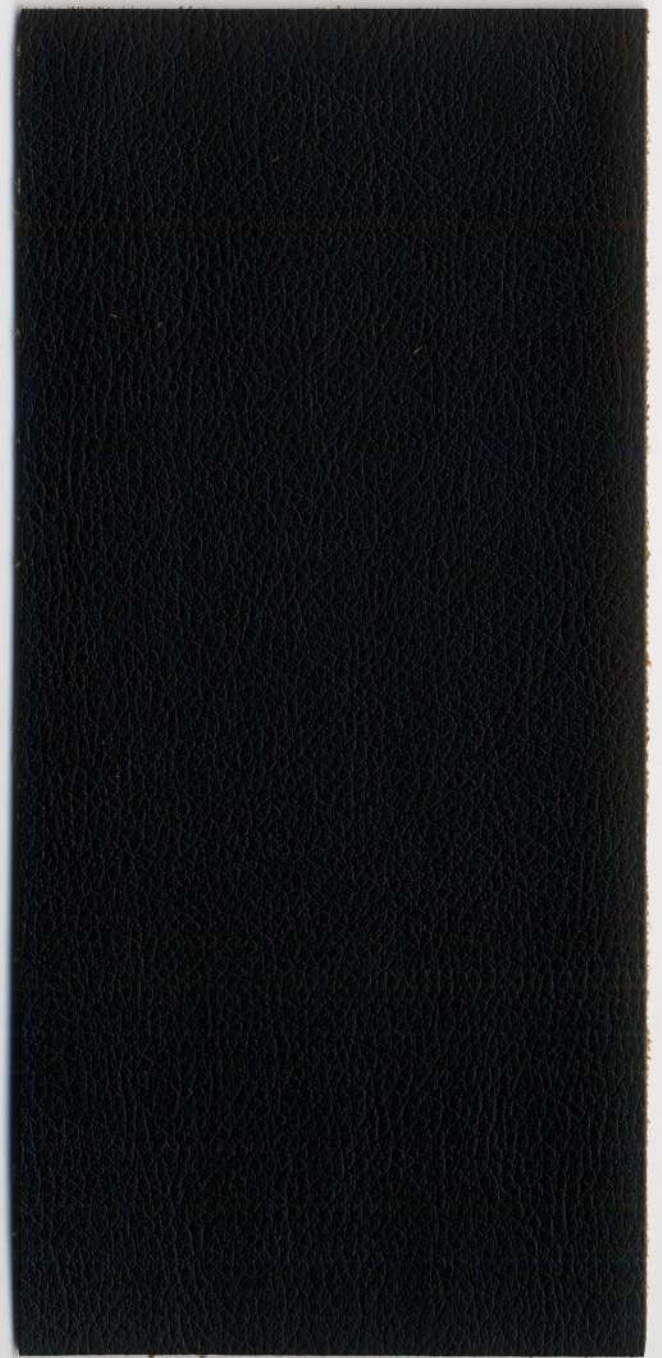
VALENTINO 613 COLONIAL GREEN



VALENTINO 488 RED



VALENTINO 089 BLUE



VALENTINO 901 BLACK



VALENTINO

VALENTINO

clean
only with water



EASY CLEAN



PHTALATES FREE



LEATHER TOUCH



REACH COMPLIANT



FIRE RETARDANT
BS 5852 part 1



SOFT TOUCH



HEAVY METAL FREE



AZO DYE FREE



MANUEL REVERT

| | | | |
|--|---|---|---|
| Composición Composition Composition | | 83% PVC - 13% PES - 4% PU | |
| Ancho Width Laize | | 140 cm | |
| Peso Weight Poids | | 950 g/m ² | |
| Rapport Repeat Rapport | | Ancho Width Laize | - |
| | | Largo Length Longueur | - |
| Martindale UNE-EN ISO 12947 - BS 2543 | | >60.000 | |
| Solidez a la luz Fastness to light Résistance à la lumière ISO 105-B02 | | 5 | |
| Solidez al agua clorada Fastness to chlorinated water Résistance à l'eau chlorée | | - | |
| Solidez al agua de mar Fastness to sea water Résistance à l'eau de mer | | - | |
| Resistencia a la flexión Flexural strength Résistance a la flexion ISO 5402 | | 100.000 | |
| Solidez al frote Fastness to rubbing Résistance au frottement | | Seco Dry Sec | 5 |
| | | Húmedo Wet Humide | 5 |
| Orientación Orientation Orientation | | | |
| Aplicaciones Application Application | | TAPIZADOS DECORACIÓN | |
| Acabado Finish Finition | Tratamiento tacto suave Soft touch finish Doux au toucher | | |
| Recomendaciones Recommendations Recommandations | <p>No exponer directamente a la luz solar. Do not expose to direct sunlight. Para su limpieza, emplear un suave paño humedecido en agua jabonosa. Use a soft cloth dampened in soapy water for its cleaning. No utilizar disolventes, lejía o detergentes agresivos. El jabón debe ser neutro. Do not use solvents, bleach or harsh detergents. Soap must be natural.</p> | | |
| Instrucciones de lavado Care instructions Entretien | | | |
| | | | |
| No lavar Do not wash Ne pas laver | No blanquear (lejía / alternativos) Do not bleach (bleach / alternatives) Ne pas blanchir (lejía / alternatives) | No secar en secadora Do not tumble dry Ne pas sécher au sèche-linge | No planchar Do not iron Ne pas repasser |
| | | | |
| No limpiar en seco Do not dry clean Ne pas laver à sec | | | |

clean
only with water

Clean regularly with a damp soapy cloth. Do not use detergents, solvent cleaners, polish, wax or patent chemicals.

Limpia con un paño húmedo y con jabón neutro. No utilizar alcoholes, lejía ni disolvente.

Pour un entretien efficace, nettoyer régulièrement avec un savon doux et une éponge. Ne pas utiliser alcool, eau de Javel ou de solvant.

OEKO-TEX®
CONFIDENCE IN TEXTILES
STANDARD 100
981736 AITEX
Tested for harmful substances.
www.oeko-tex.com/standard100

Soy Empresa Circular

clevercare.info

