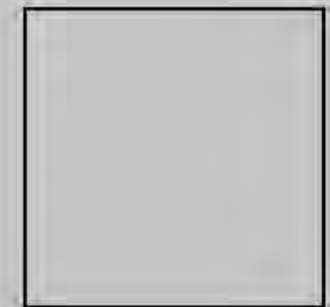
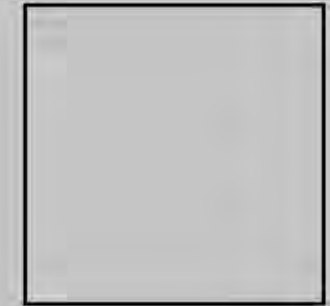
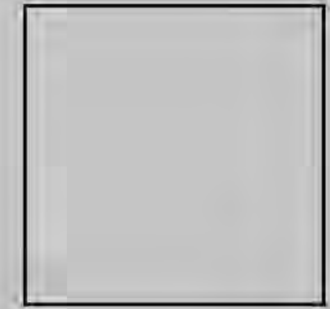


STUDIO

COLLECTION



MANUEL REVERT





MANUEL REVERT

www.revert.es



stain stop &
clean
only with water 



STUDIO

COLLECTION



MANUEL REVERT





PLAZA TAUPE



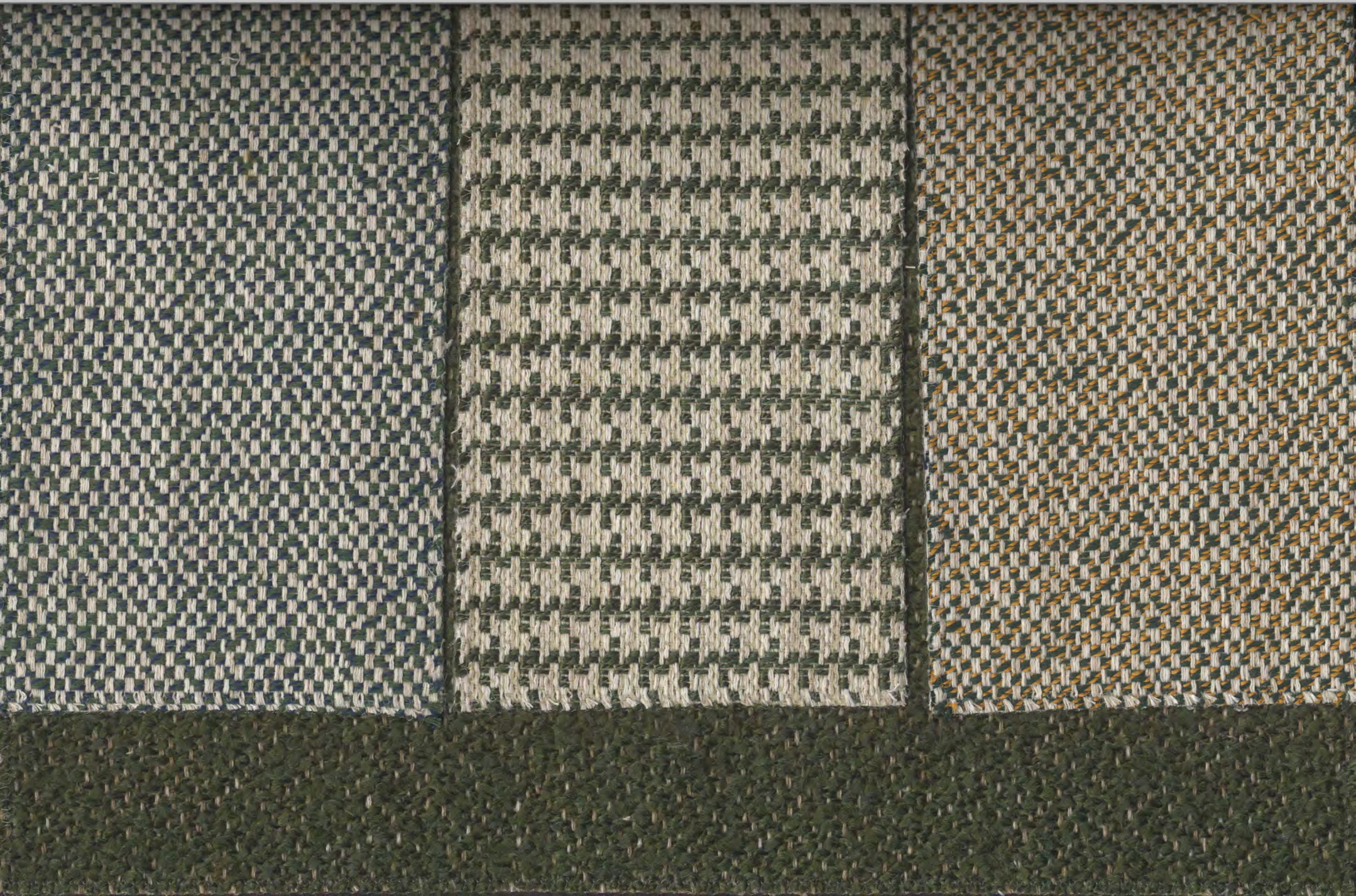






BRONZE GREEN

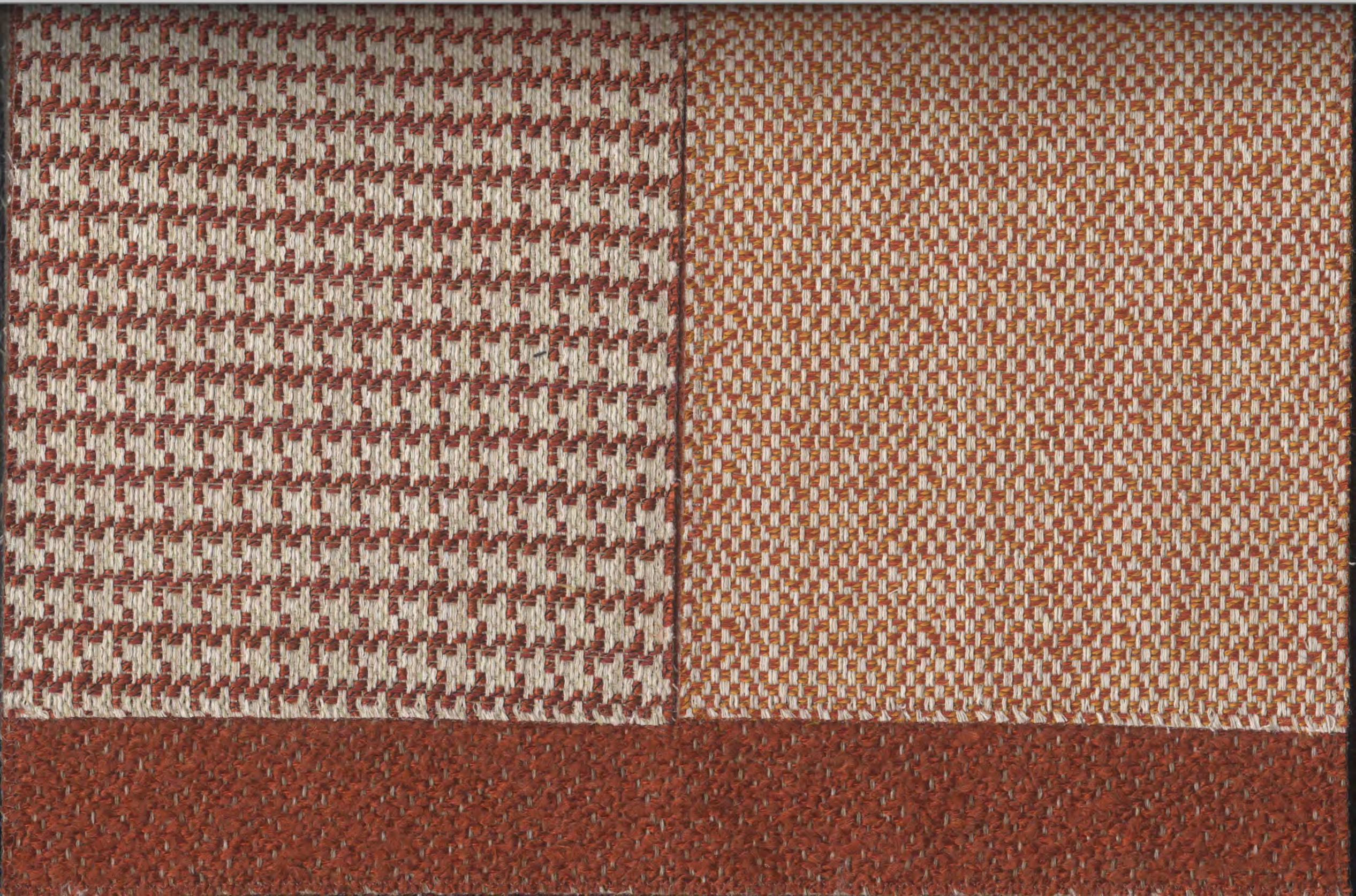


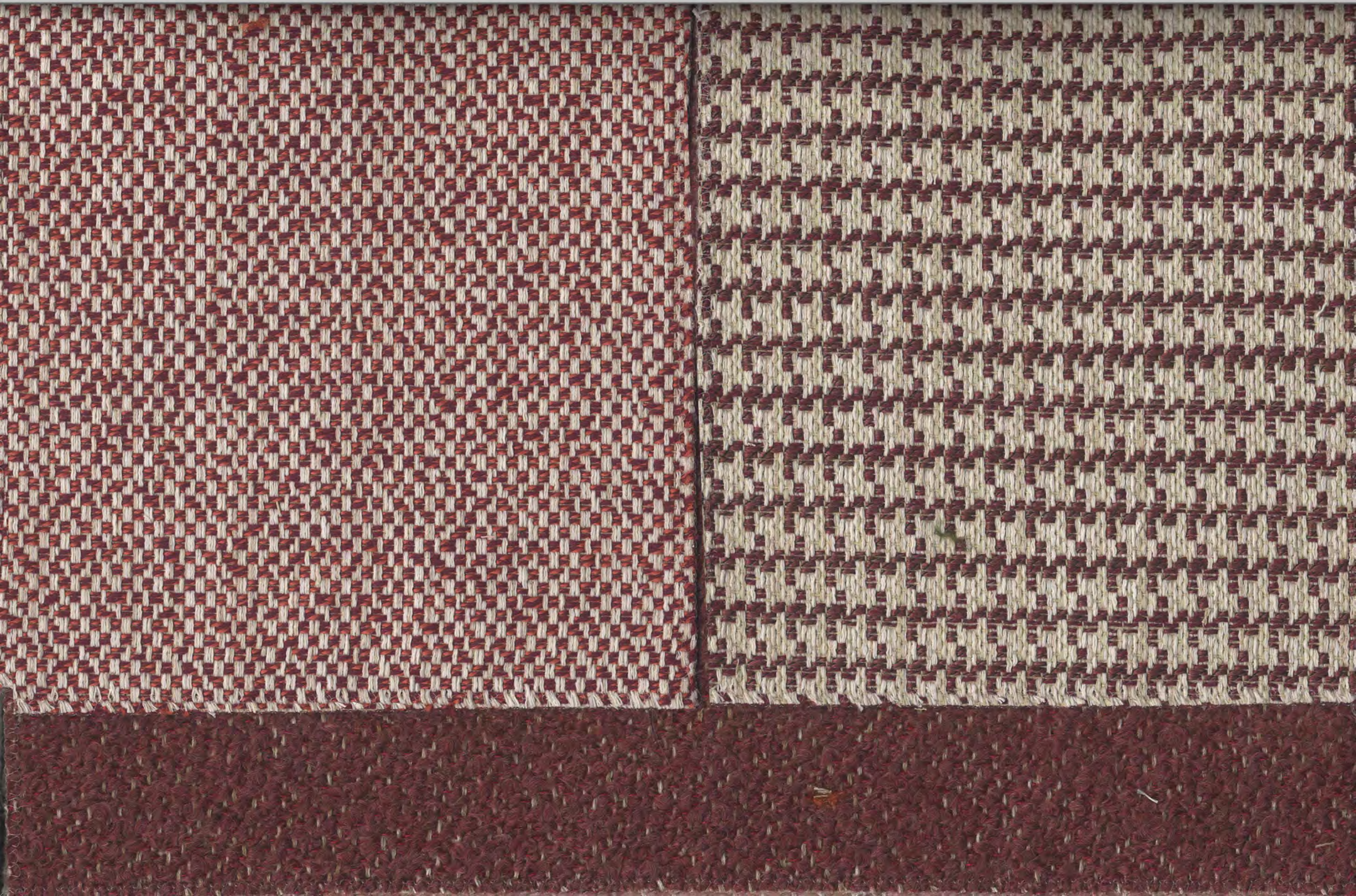






TIBETAN RED

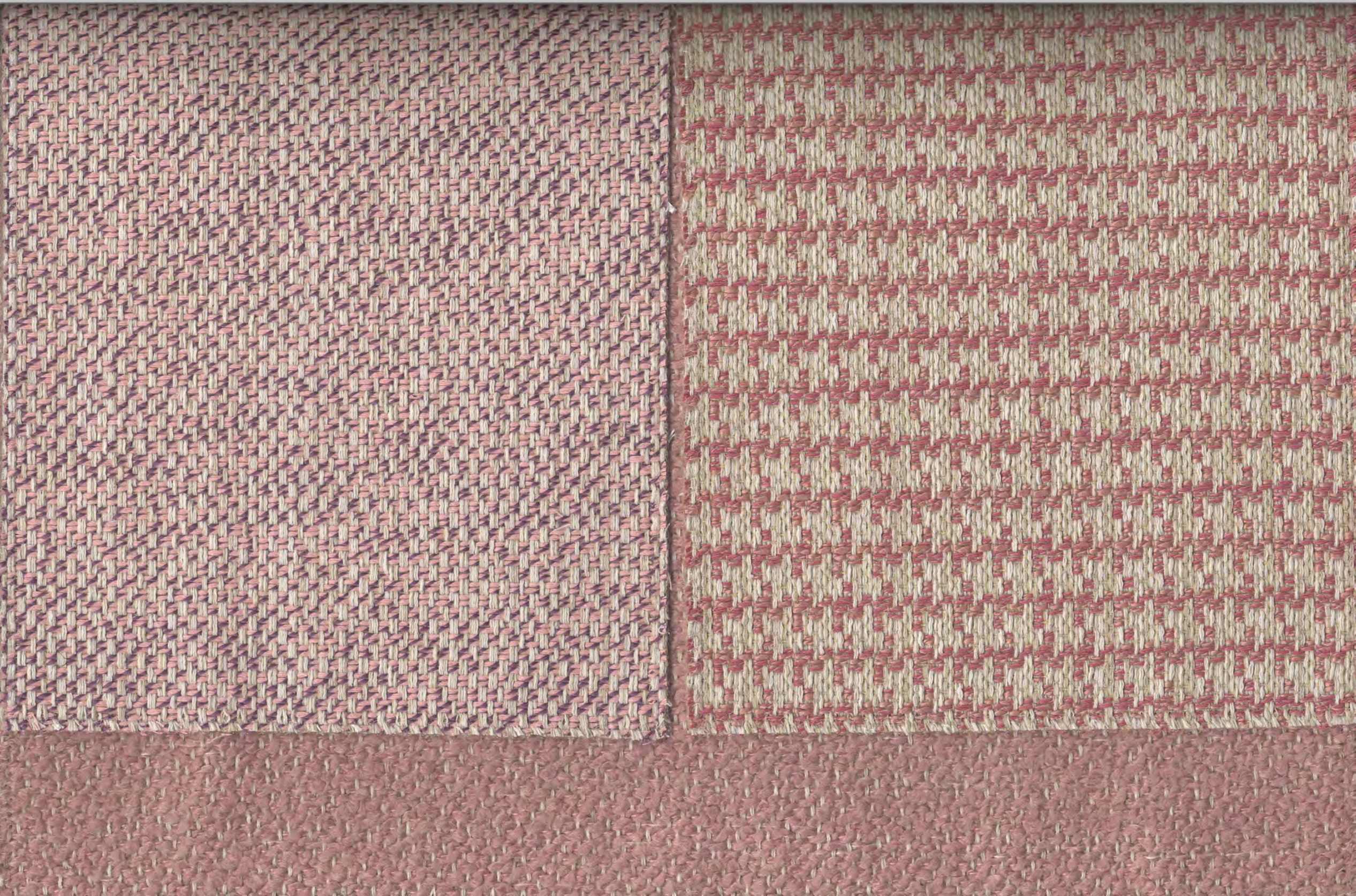




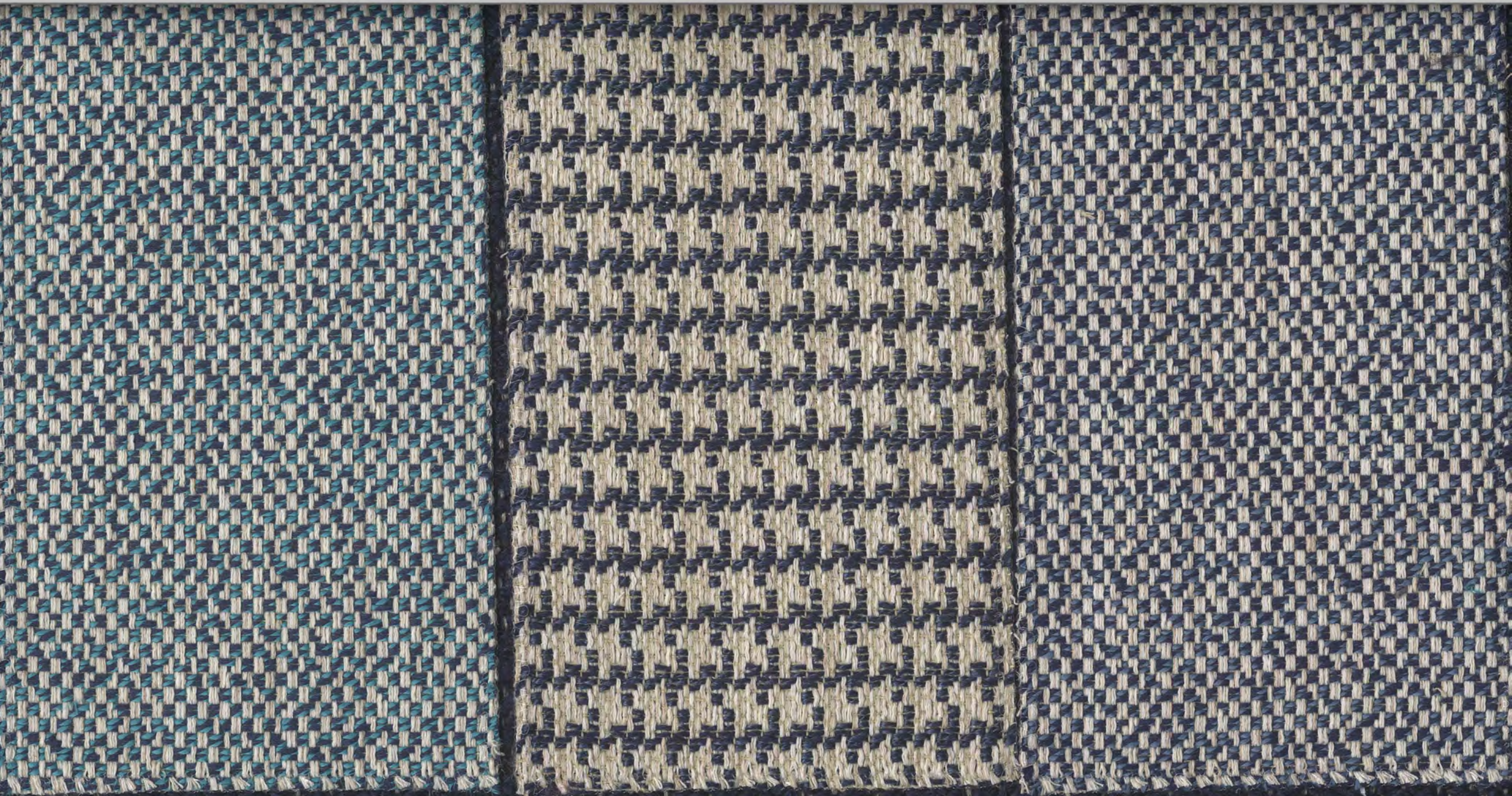




ORCHID ICE



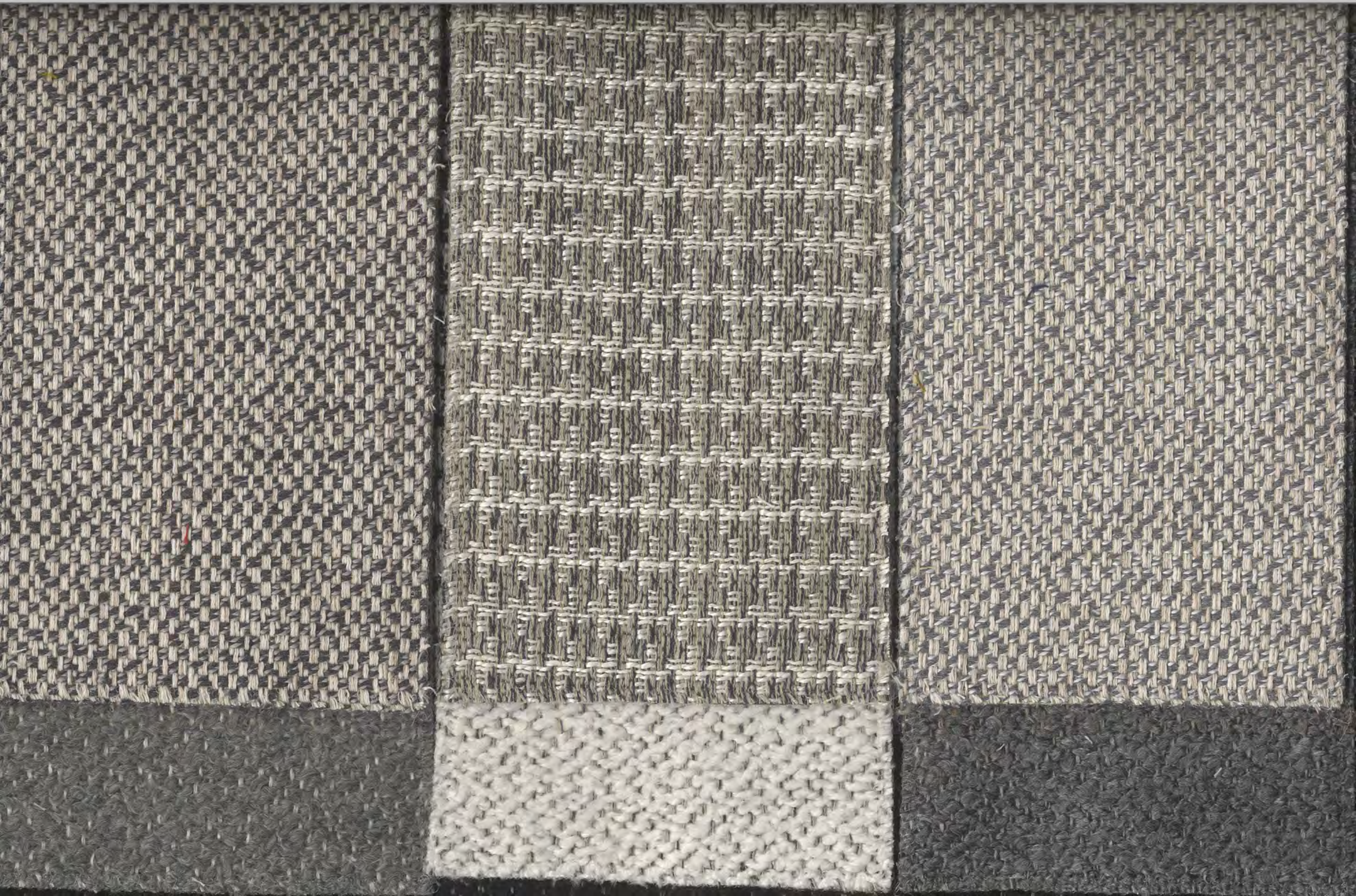


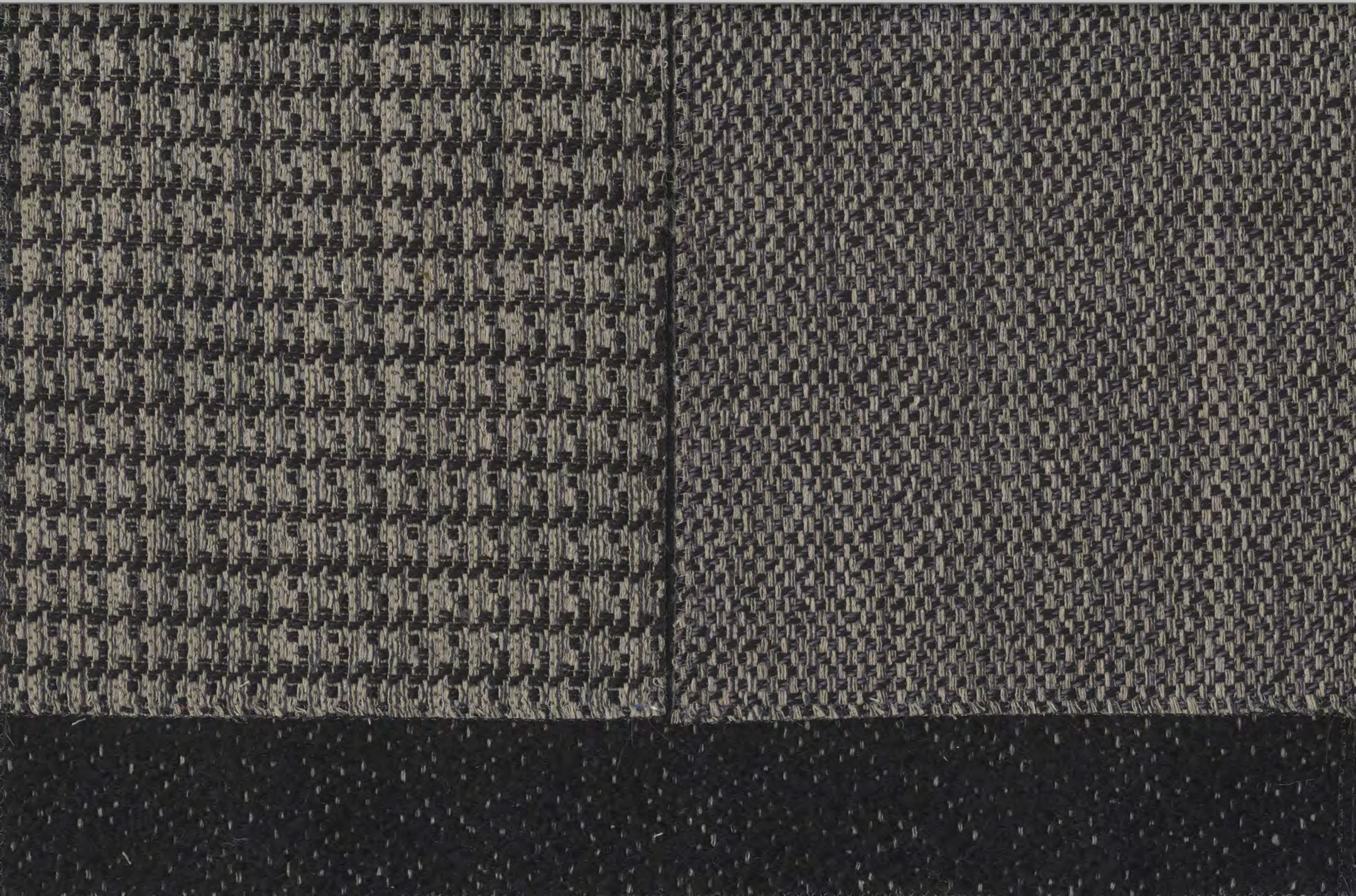






GRAY VAPOR



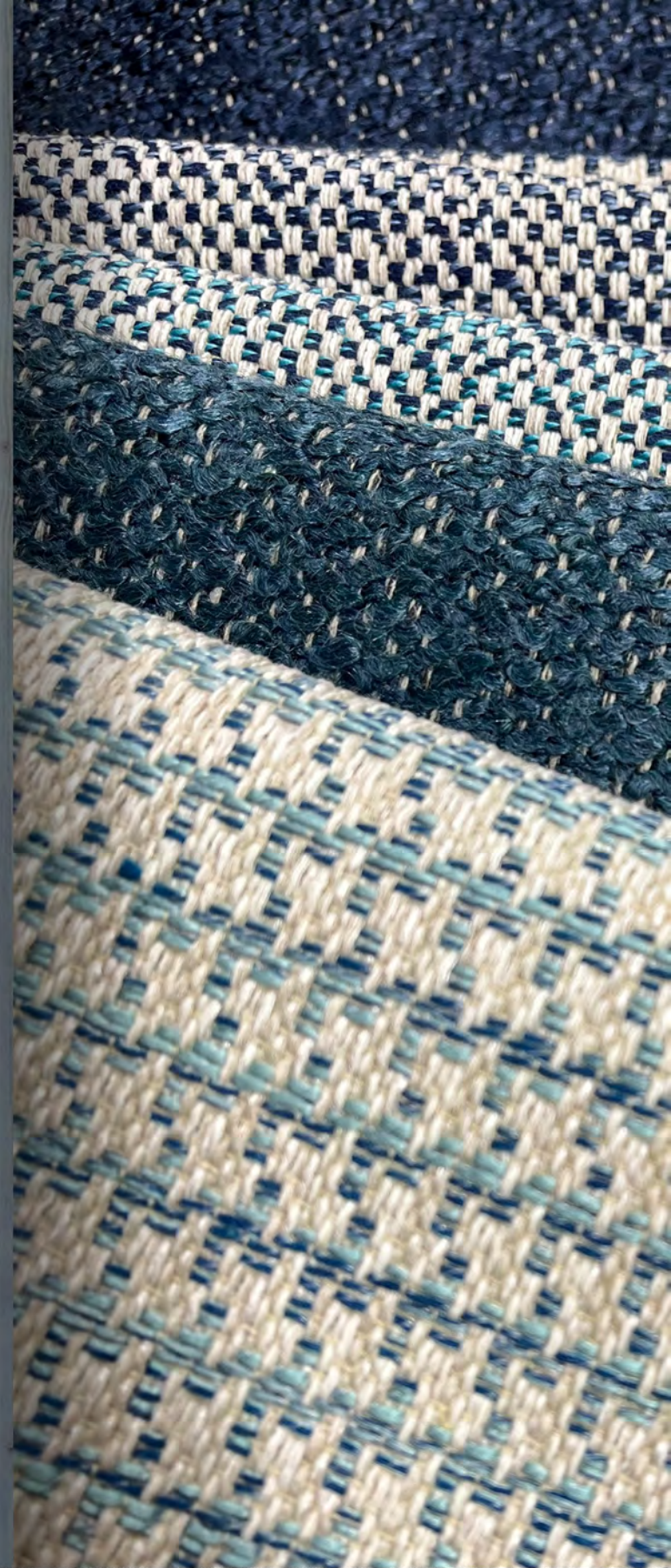


STUDIO

COLLECTION



MANUEL REVERT



STUDIO

COLLECTION



70% OF THE COTTON IN OUR PRODUCTS IS RECYCLED MATERIAL.



140 cm ANCHO | WIDTH

MADE IN SPAIN FABRICS

Nombre Name Nom	Composición Composition Composition	Peso Weight Poids	Marrindale UNE-EN ISO 12947-2	Pilling UNE-EN ISO 12945-2	Costuras Seam slippage Glissement des fils de couture UNE-EN ISO 13936-2		Estabilidad dimensional al lavado (30° C) Shrinkage to washing Retrait au lavage		Aplicaciones Application Application	Instrucciones de lavado Care instructions Entretien
					Urd. Warp Chaîne	Trama Weave Trame	Urd. Warp Chaîne	Trama Weave Trame		
CETARA	61% PES - 38% CO - 1% PA	630 g/m ²	50.000	4	< 4 mm	< 3 mm	≤ 4%	≤ 3,5%		
LIONI	36% PES - 35% PAC - 28% CO - 1% PA	680 g/m ²	>45.000	4	< 4,5 mm	< 3,5 mm	≤ 4%	≤ 3%		
SORRENTO	42% CO - 40% PES - 17% PAC - 1% PA	590 g/m ²	>45.000	4	< 4 mm	< 3 mm	≤ 4%	≤ 3%		

DIRECCIÓN Y RAPPORT DEL TEJIDO / DESIGN DIRECTION AND RAPPORT



CETARA
RAPPORT: cont ↔
cont ↓



LIONI
RAPPORT: cont ↔
cont ↓



SORRENTO
RAPPORT: 1 cm ↔
1 cm ↓



stainstop technology

Manuel Revert's new upholstery collection incorporates a finish that will make your life easier. With little water and a towel, worries disappear. No stains, no problems.

La nueva colección de tapicería de Manuel Revert incorpora un acabado que te hará la vida más fácil. Con un poco de agua y una toalla, desaparecen las preocupaciones. Sin manchas, sin problemas.



MANUEL REVERT



Más del 70% del algodón empleado en nuestros productos es materia reciclada.

Se recicla, reutiliza o valoriza el 70% de los residuos industriales generados. Además somos Centro de Trabajo Sostenible: separamos y reciclamos otro tipo de envases.

Somos Empresa Circular, ya que trabajamos con Ecoembes para que los envases que llegan a los hogares españoles puedan ser reciclados.

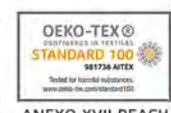
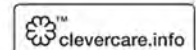
Somos Embajadores del Programa Clevercare.

70% of the cotton used in our products is recycled material.

70% of the industrial waste generated is recycled, reused or recovered. In addition, we are a Sustainable Work Centre: we sort and recycle other types of waste.

We are "Empresa Circular" since we work with Ecoembes so that the packaging that gets to Spanish homes can be recycled.

We are ambassadors of the Clevercare project.



ANEXO XVII REACH