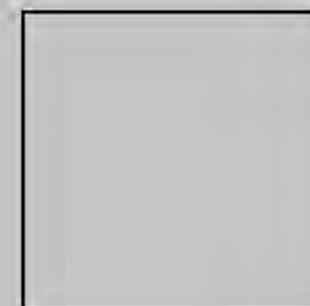
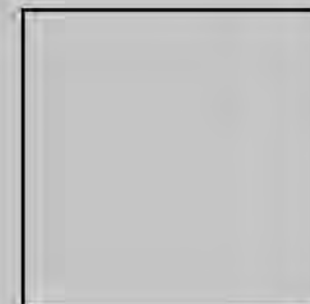


Boutique

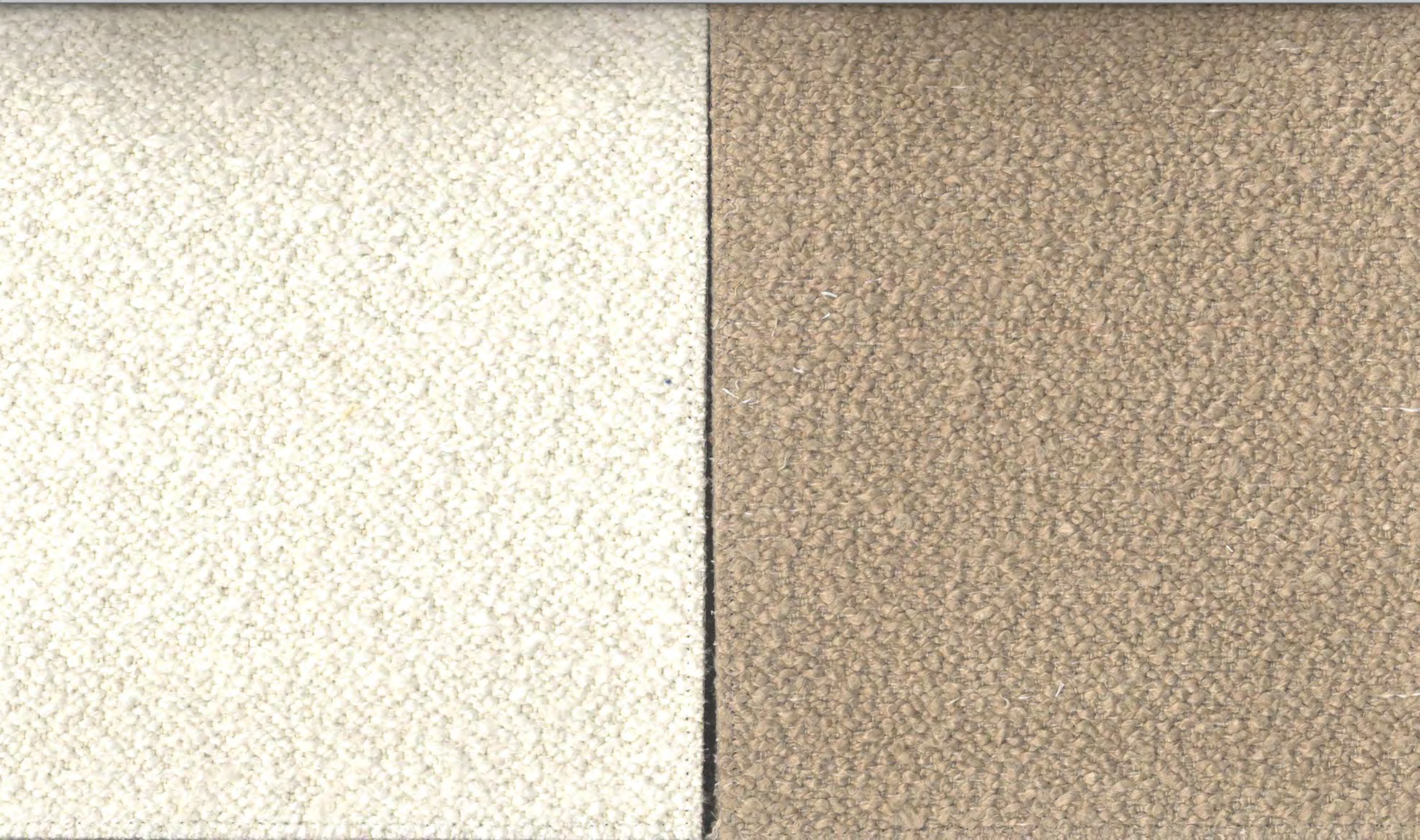
COLLECTION



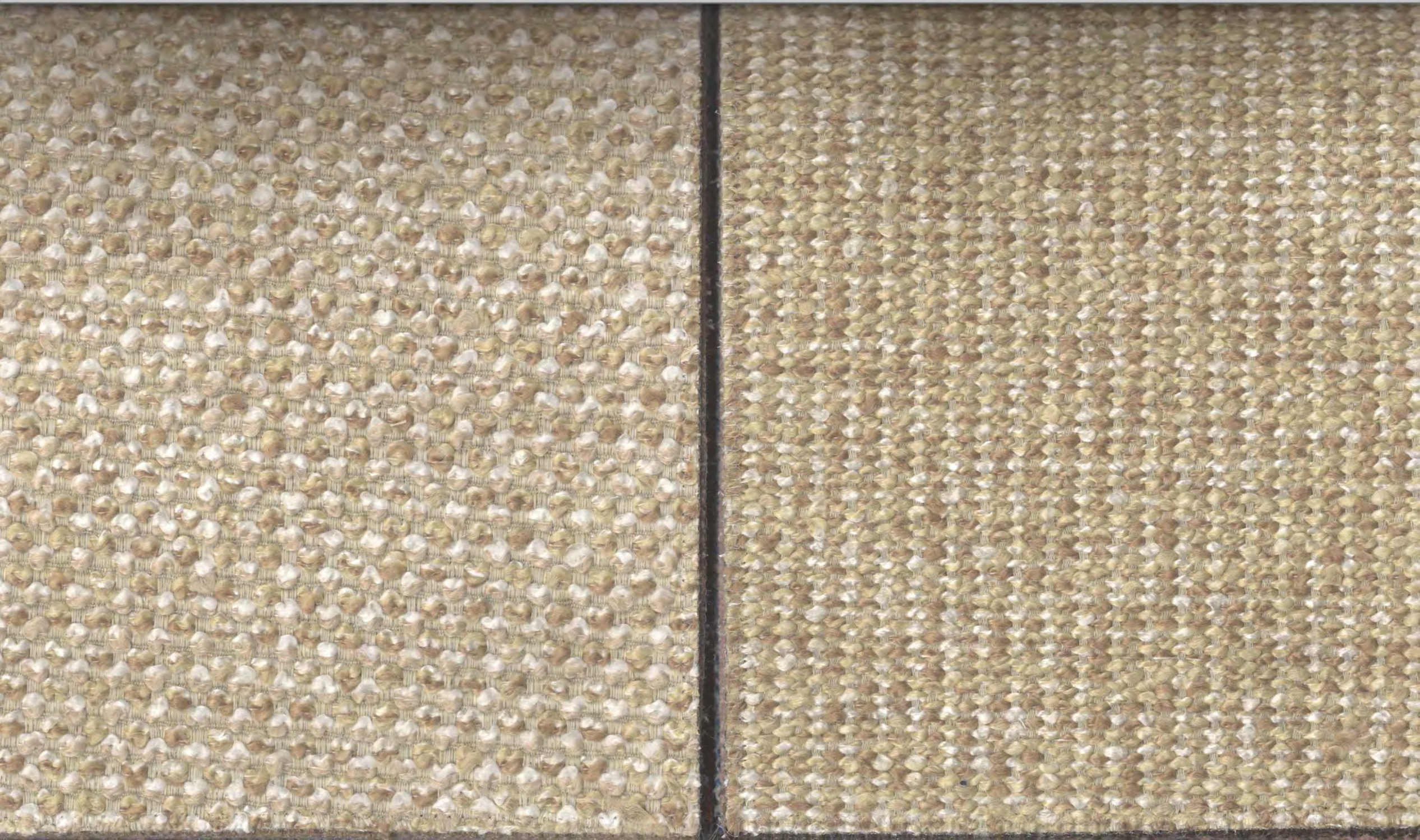
MANUEL REVERT













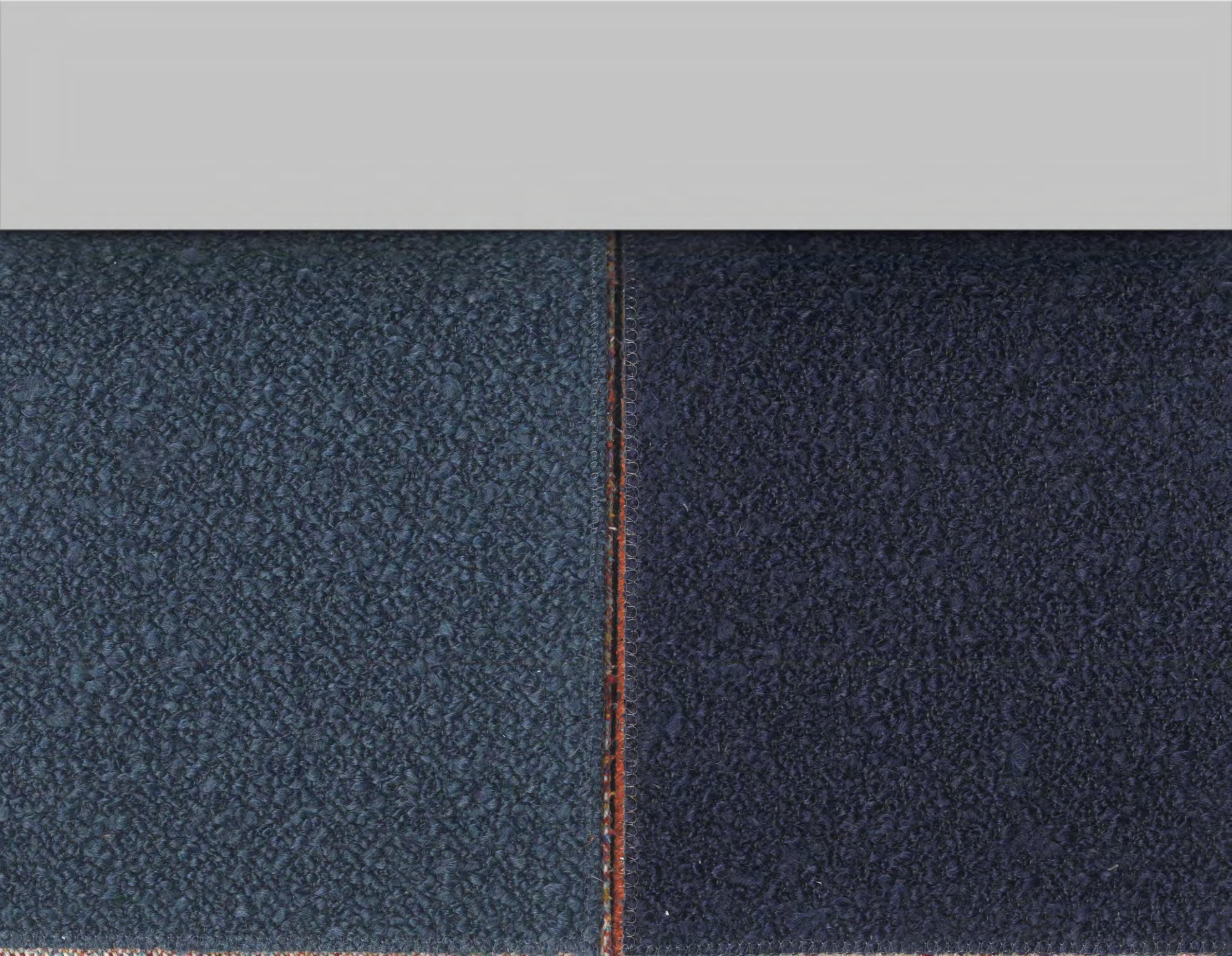




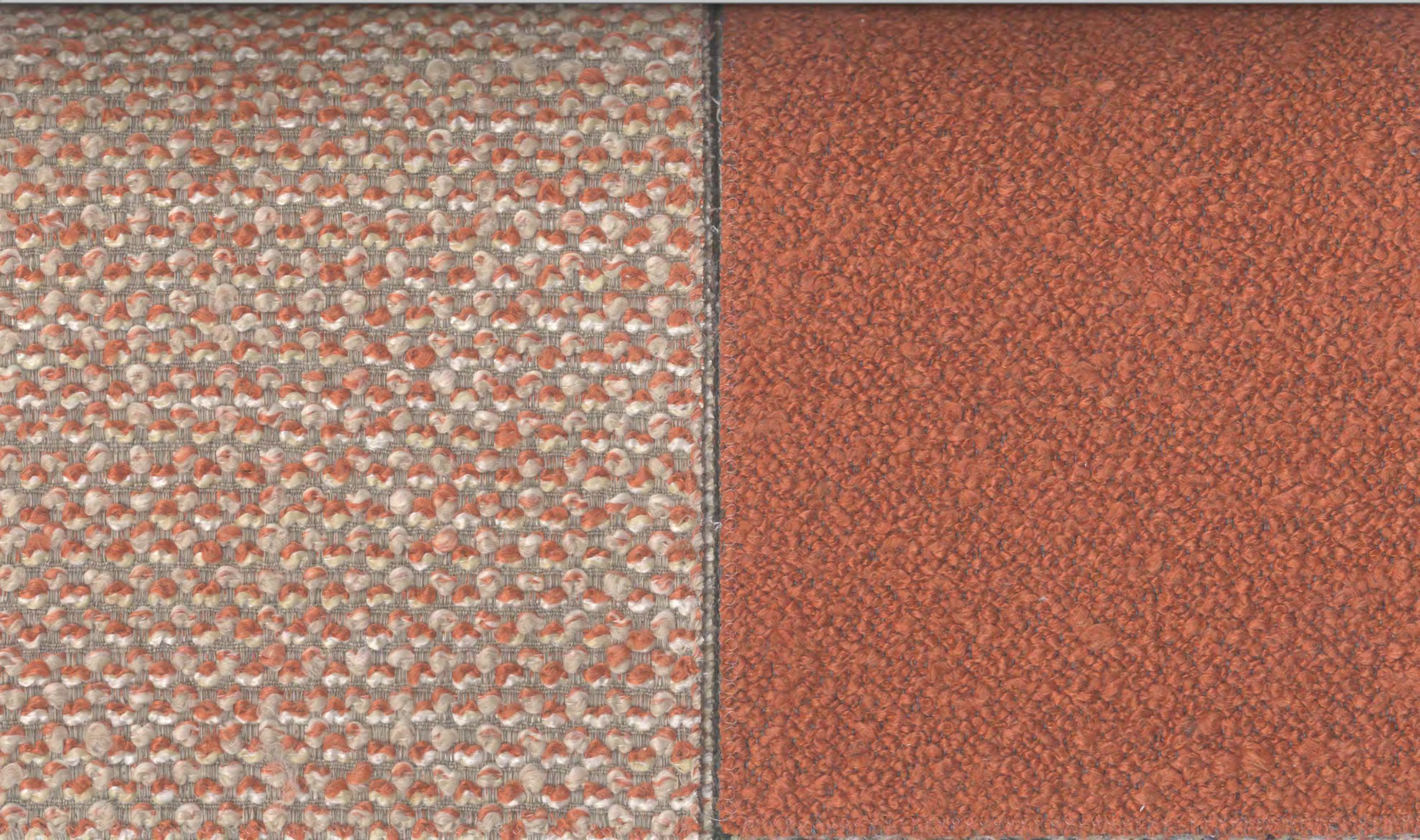






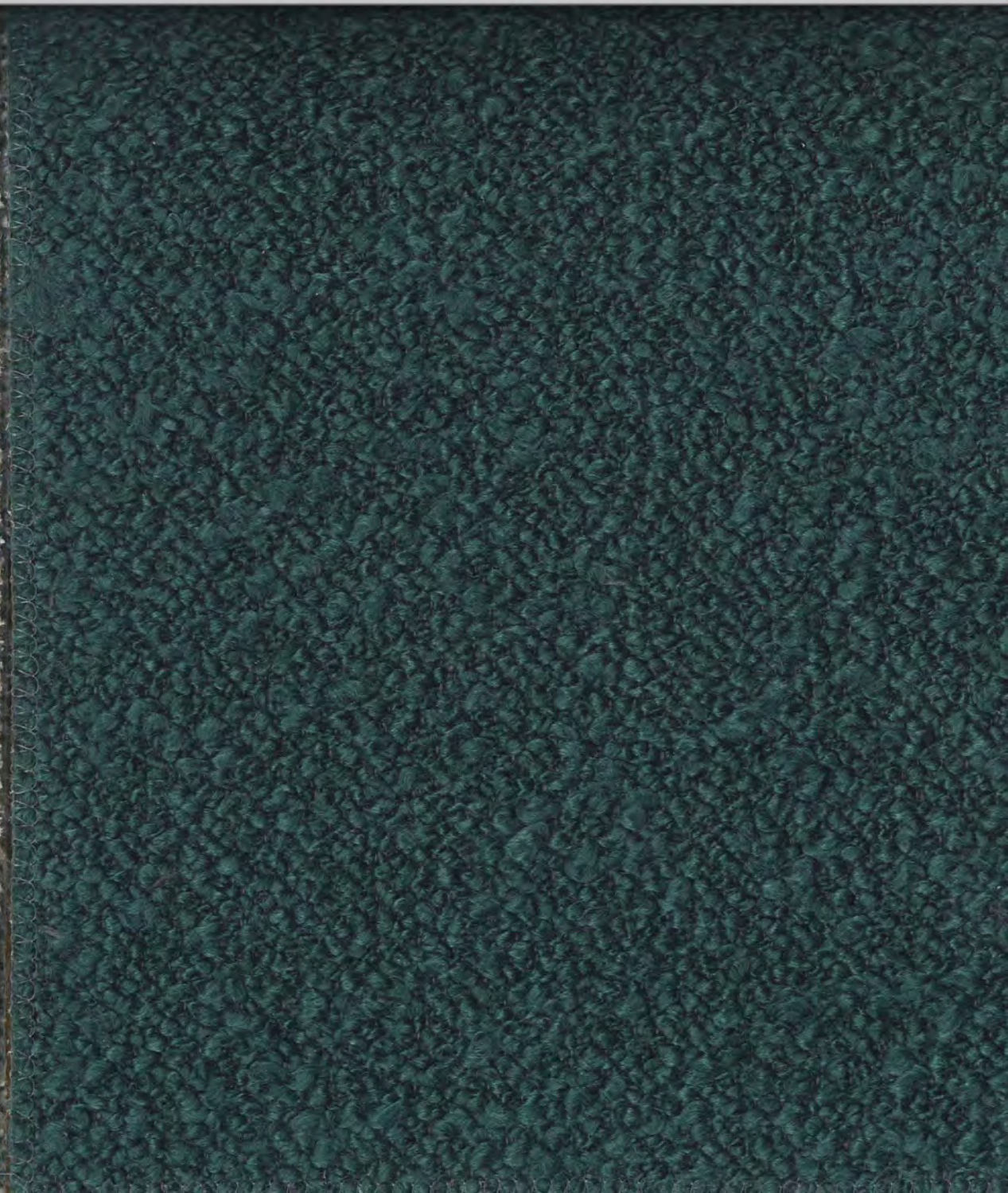


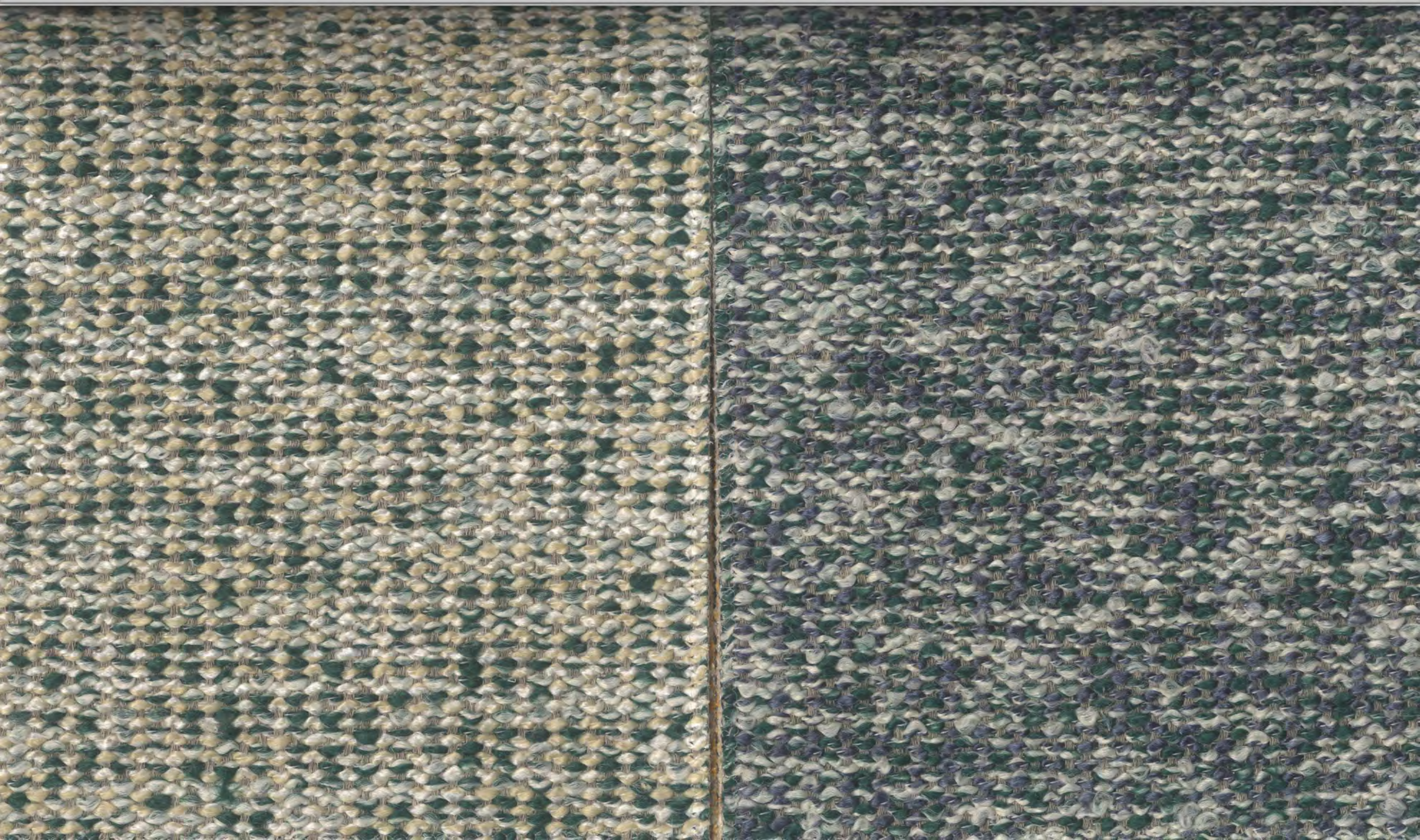




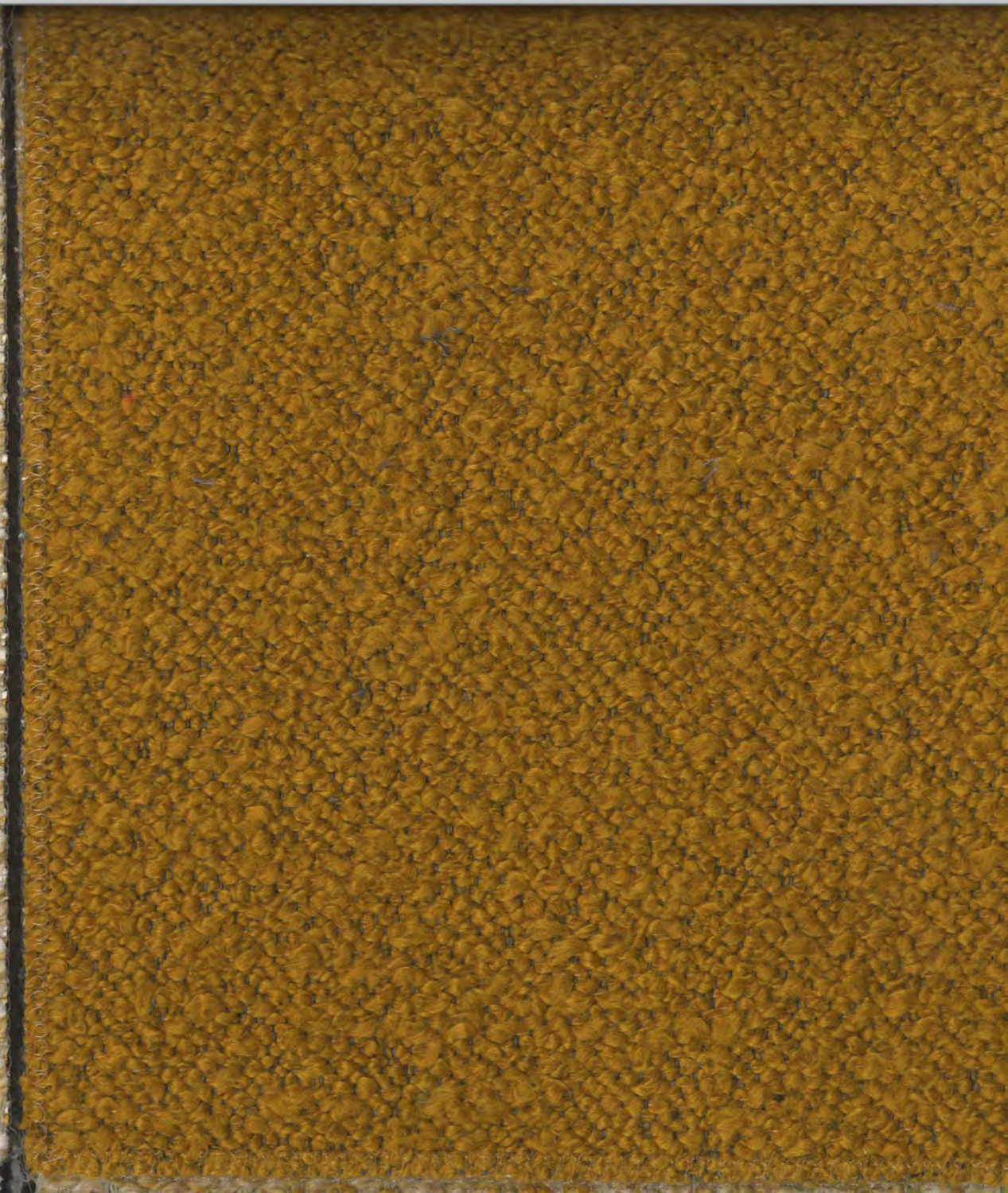




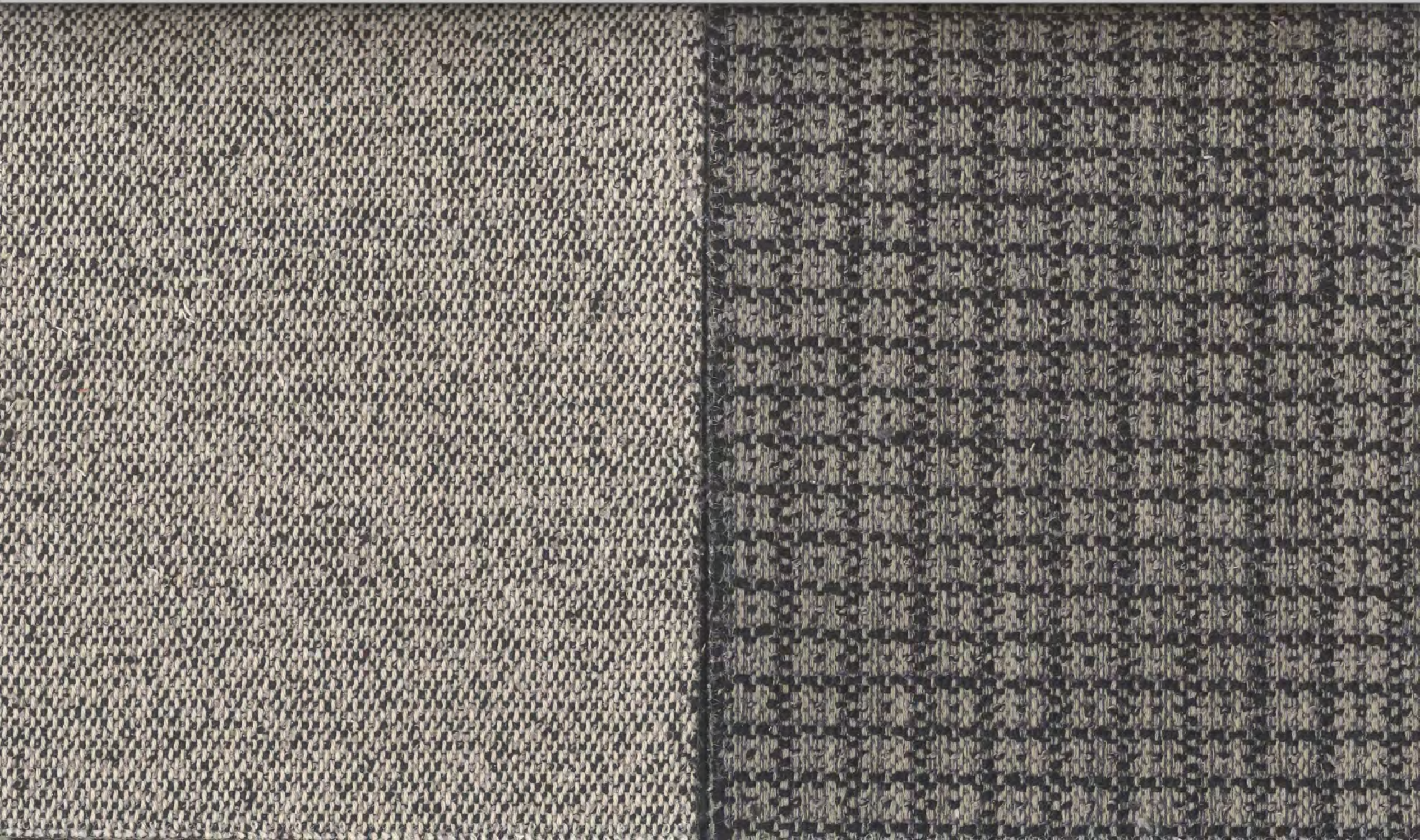


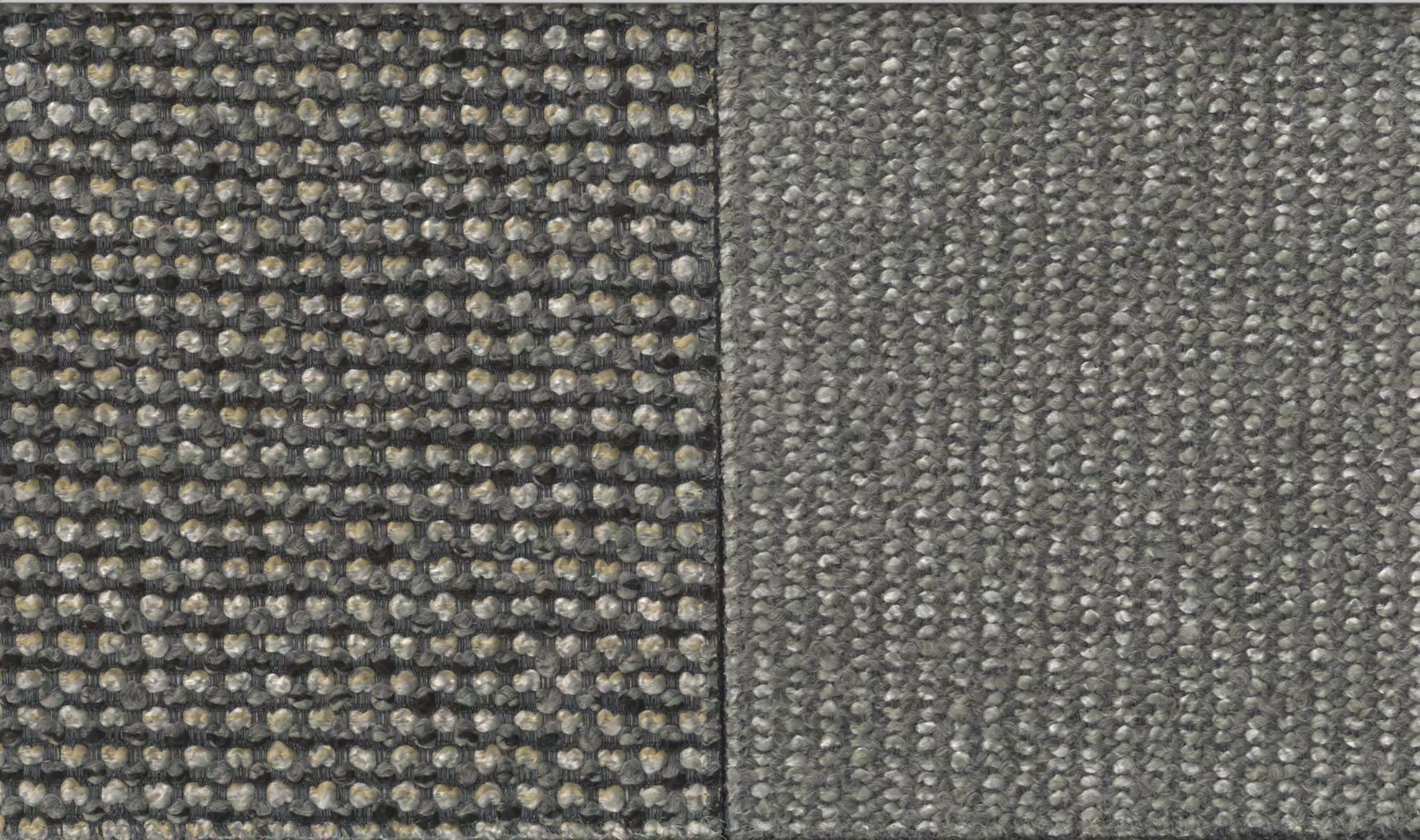


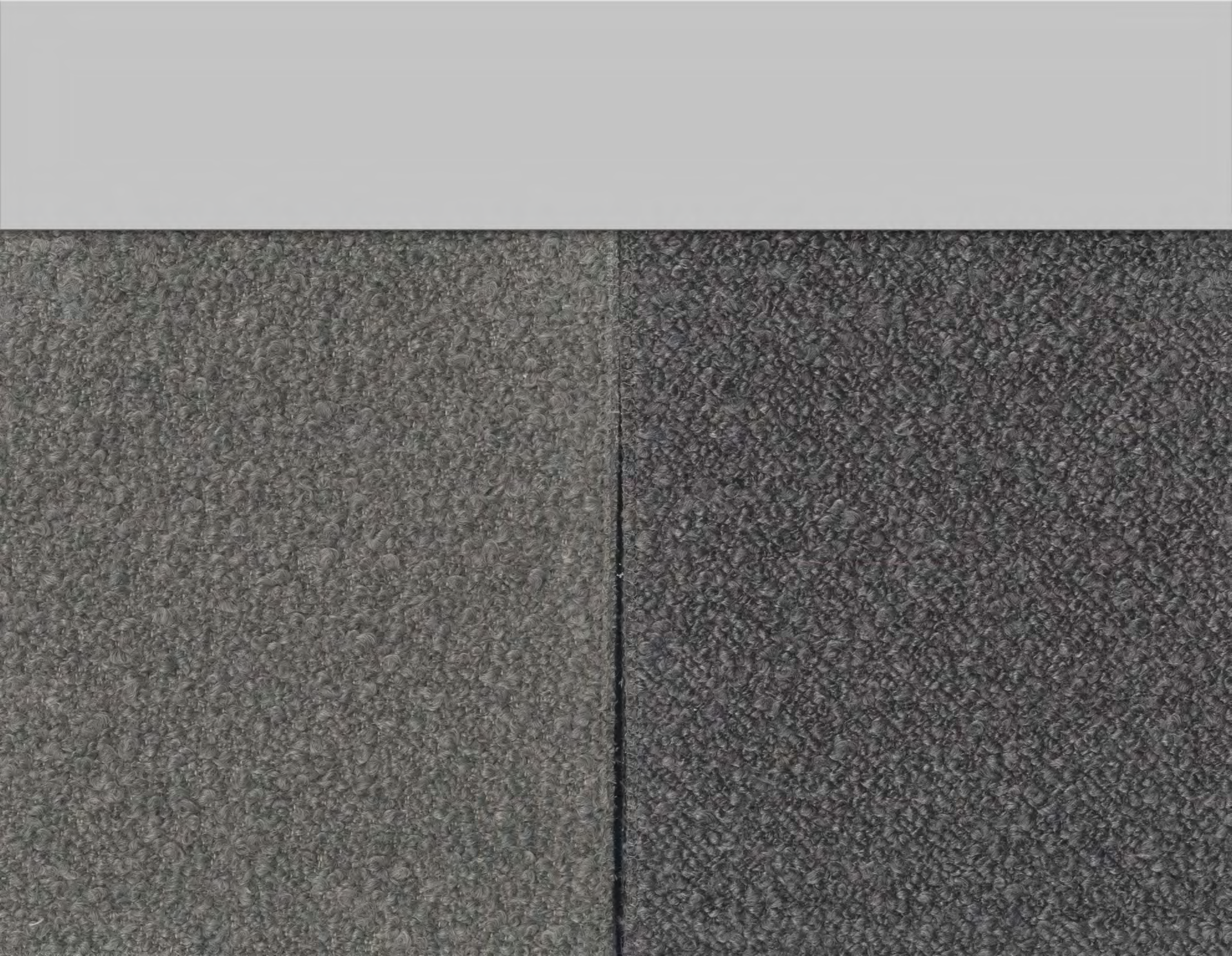


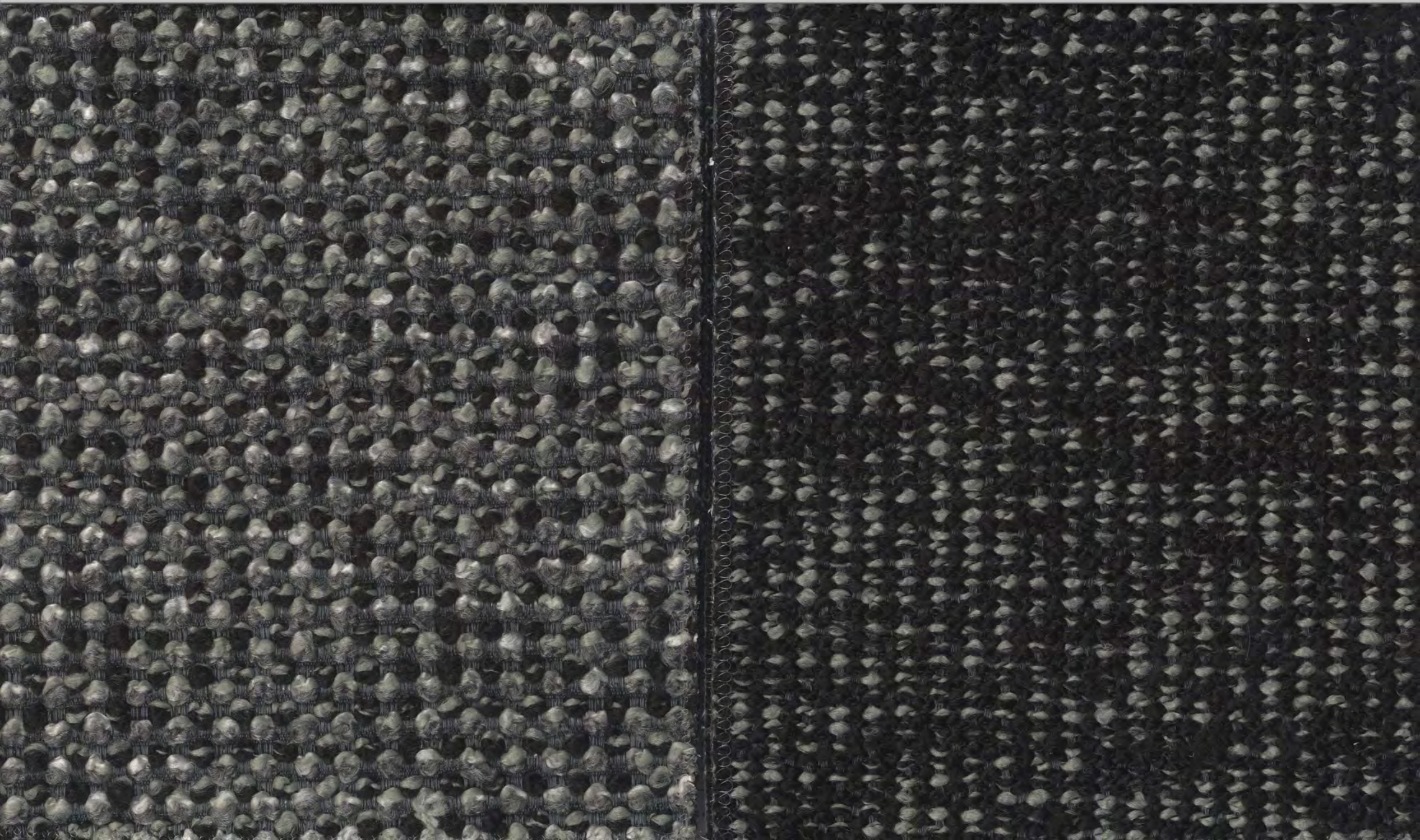














Boutique

COLLECTION

140 cm ANCHO | WIDTH
MADE IN SPAIN FABRICS



STAIN RESISTANT



BALLPOINT PROOF



EASY CLEAN



FIRE RETARDANT
B5 5852 part 1



AZO DYE FREE



SOFT TOUCH



REACH COMPLIANT



70% OF THE COTTON IN OUR PRODUCTS IS RECYCLED MATERIAL.



Nombre Name Nom	Composición Composition Composition	Peso Weight Poids	Martindale UNE-EN ISO 12947-2	Pilling UNE-EN ISO 12945-2	Costuras Seam slippage Glissement des fils de couture UNE-EN ISO 13936-2		Estabilidad dimensional al lavado (30° C) Shrinkage to washing Retrait au lavage		Aplicaciones Application Application	Instrucciones de lavado Care instructions Entretien
					Urd. Warp Chaine	Trama Weft Trame	Urd. Warp Chaine	Trama Weft Trame		
BACOLI	59% PAC - 37% CO - 2% PAC - 1% VIS - 1% PA	620 g/m ²	>40.000	4-5	< 4 mm	< 4 mm	≤ 4%	≤ 4%		
BEIRA	49,5% PAC - 38,5% PES - 12% CO	522 g/m ²	>35.000	4-5	< 4 mm	< 4 mm	≤ 3,5%	≤ 4%		
CASERTA	52% PAC - 39% PES - 9% CO	550 g/m ²	>50.000	4-5	< 4 mm	< 4 mm	≤ 3,5%	≤ 4%		
CUNEO	53% CO - 45% PES - 1% PA - 1% O.F.	570 g/m ²	60.000	4	< 4 mm	< 3,5 mm	≤ 4%	≤ 3%		
UDINE	54% PAC - 35% PES - 11% CO	550 g/m ²	>50.000	4-5	< 4 mm	< 4 mm	≤ 3,5%	≤ 4%		



stainstop technology

Manuel Revert's new upholstery collection incorporates a finish that will make your life easier. With little water and a towel, worries disappear. No stains, no problems.

La nueva colección de tapicería de Manuel Revert incorpora un acabado que te hará la vida más fácil. Con un poco de agua y una toalla, desaparecen las preocupaciones. Sin manchas, sin problemas.



MANUEL REVERT



ANEXO XVII REACH

Más del 70% del algodón empleado en nuestros productos es materia reciclada.

Se recicla, reutiliza o valoriza el 70% de los residuos industriales generados. Además somos Centro de Trabajo Sostenible: separamos y reciclamos otro tipo de envases.

Somos Empresa Circular, ya que trabajamos con Ecoembes para que los envases que llegan a los hogares españoles puedan ser reciclados.

Somos Embajadores del Programa Clevercare.

70% of the cotton used in our products is recycled material.

70% of the industrial waste generated is recycled, reused or recovered. In addition, we are a Sustainable Work Centre: we sort and recycle other types of waste.

We are "Empresa Circular" since we work with Ecoembes so that the packaging that gets to Spanish homes can be recycled.

We are ambassadors of the Clevercare project.

