

# CASUAL



MANUEL REVERT

[www.revert.es](http://www.revert.es)

# CASUAL

BONE WHITE



SIMPLY TAUPE



MINERAL GOLD



CORAL CLOUD



AEGEAN BLUE



GREEN EYES



GALAPAGOS GREY



TOTAL ECLIPSE



MANUEL REVERT

[www.revert.es](http://www.revert.es)





BONE WHITE

# SIMPLY TAUPE





SIMPLY TAUPE

# MINERAL GOLD





MINERAL GOLD



# CORAL CLOUD





CORAL CLOUD

# AEGEAN BLUE

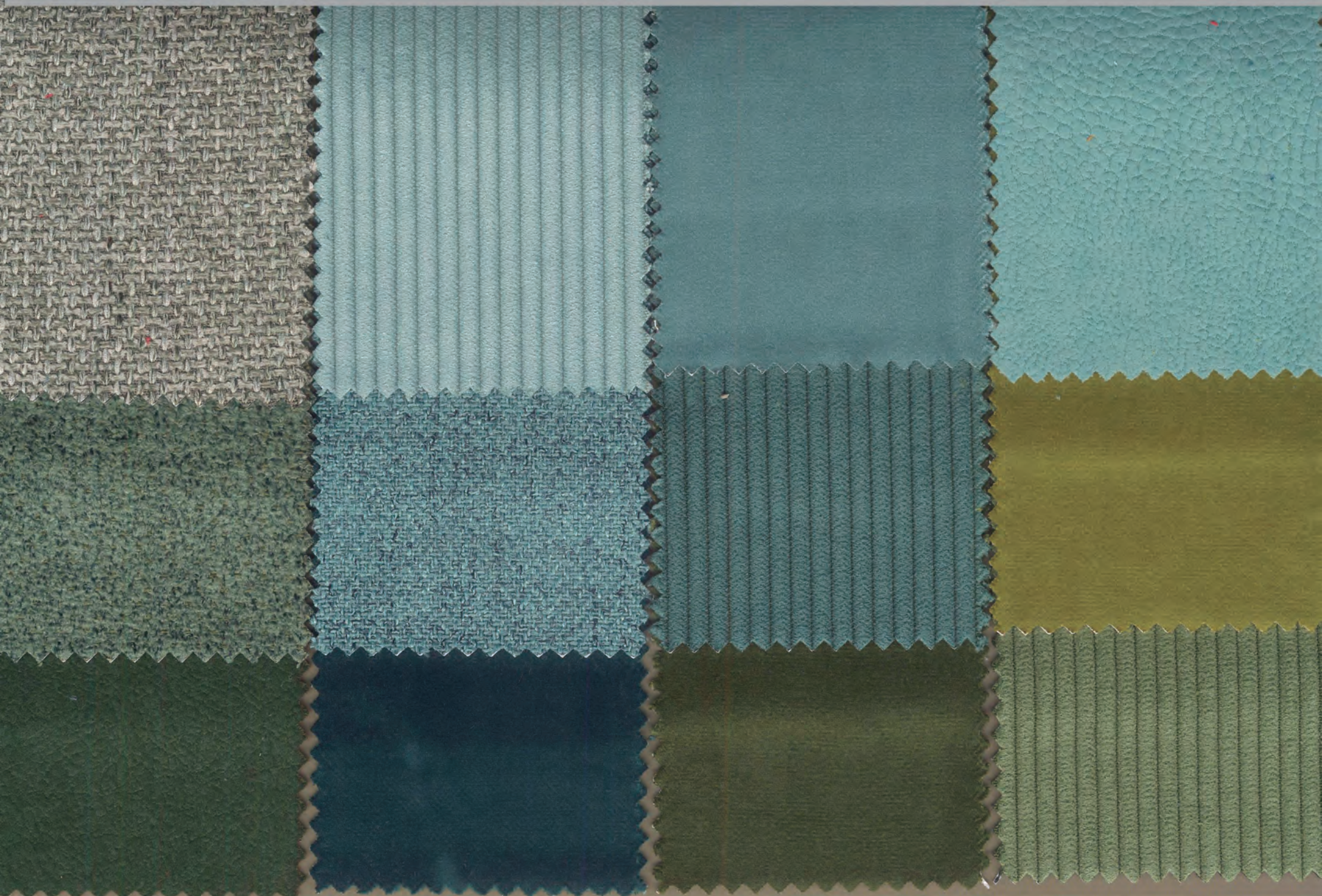




AEGEAN BLUE

# GREEN EYES





GREEN EYES

# GALAPAGOS GREY



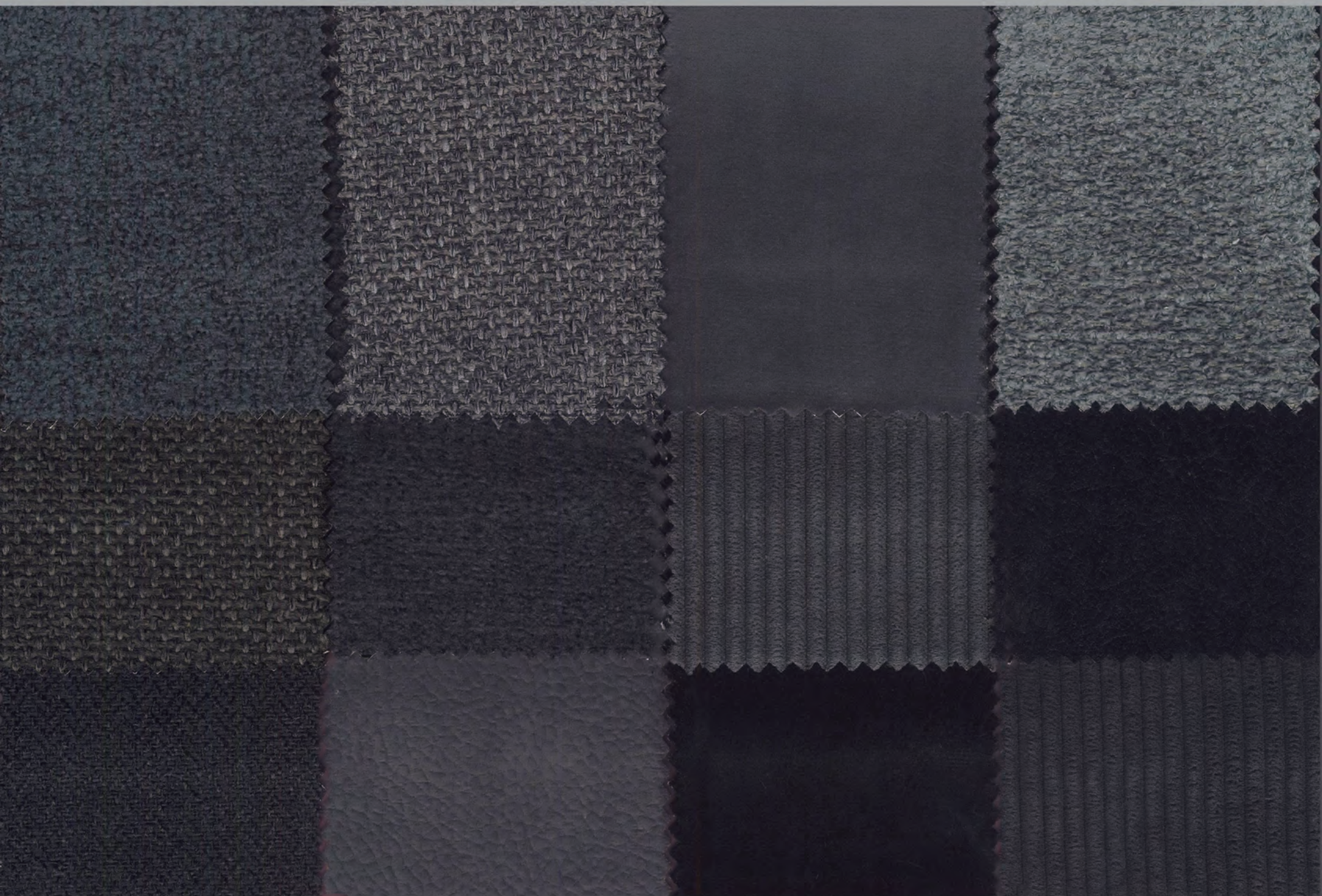


GALAPAGOS GREY



# TOTAL ECLIPSE





TOTAL ECLIPSE

COLECCIÓN  
**CASUAL**  
140 cm ANCHO | WIDTH

clean  
only with water



STAIN RESISTANT



WATER RESISTANT



EASY CLEAN



BALLPOINT PROOF



FIRE RETARDANT  
BS 5852 part 1



AZO DYE FREE





SOFT TOUCH



REACH COMPLIANT

**MANUEL REVERT**

Nombre   Name   Nom	Composición   Composition   Composition	Peso   Weight   Poids	Martindale UNE-EN ISO 12947-2	Pilling UNE-EN ISO 12945-2	Costuras   Seam slippage   Glissement des fils de couture   UNE-EN ISO 13936-2		Estabilidad dimensional al lavado (30° C)   Shrinkage to washing   Retrait au lavage		Aplicaciones   Application   Application	Instrucciones de lavado   Care instructions   Entretien
					Urd.   Warp   Chaîne	Trama   Weft   Trame	Urd.   Warp   Chaîne	Trama   Weft   Trame		
BAROJA	100% PES	410 g/m <sup>2</sup>	>50.000	4-5	< 3 mm	< 3 mm	≤ 1,5%	≤ 1,5%	 	
BUTTERFLY	92% PES - 8% PA	335 g/m <sup>2</sup>	>40.000	4-5	< 3 mm	< 2 mm	≤ 1%	≤ 0,5%		
ENEAS	100% PES	408 g/m <sup>2</sup>	>50.000	4	< 3 mm	< 4 mm	≤ 0,5%	≤ 1%		
HAMBLET	100% PES	387 g/m <sup>2</sup>	>40.000	4	< 3 mm	< 3 mm	≤ 1,5%	≤ 1%		
NABUCCO	100% PES	450 g/m <sup>2</sup>	>60.000	4-5	< 3 mm	< 2 mm	≤ 1%	≤ 0,5%		
ORONTEA	100% PES	480 g/m <sup>2</sup>	>40.000	4	< 3 mm	< 2 mm	≤ 1%	≤ 0,5%		

MADE IN SPAIN FABRICS

## DIRECCIÓN Y RAPPORT DEL TEJIDO / DESIGN DIRECTION AND RAPPORT



BAROJA  
RAPPORT: cont ↔  
cont ↓



BUTTERFLY  
RAPPORT: cont ↔  
cont ↓



ENEAS  
RAPPORT: cont ↔  
cont ↓



HAMBLET  
RAPPORT: cont ↔  
cont ↓



NABUCCO  
RAPPORT: cont ↔  
cont ↓



ORONTEA  
RAPPORT: cont ↔  
cont ↓



clean  
only with water

Clean regulary with a damp soapy cloth.  
Do not use detergents, solvent cleaners,  
polish, wax or patent chemicals.

Limpiar con un paño húmedo y con jabón  
neutro. No utilizar alcoholes, lejía ni  
disolvente.

Pour un entretien efficace, nettoyer  
régulièrement avec un savon doux et une  
éponge. Ne pas utiliser alcool, eau de  
Javel ou de solvant.